



■ Photo may include optional equipment.

We build a better future

# 35/40/45/50B-7 AC

FORKLIFT TRUCKS Environmental - Friendly





## New Criterion of Forklift Trucks

Hyundai introduces a new line of 7-series battery forklift trucks.  
Excellent power and performance make your business more profitable.





# 35/40/45/50B-7 AC



■ Photo may include optional equipment.

HYUNDAI FORKLIFT 03



# The New AC Control B Series

Designed with a durable frame and built to offer excellent stability and a smooth ride, AC Control B Series trucks are real workhorses.



■ Photo may include optional equipment.

## High Technology ZAPI Controller

The efficient, almost noiseless, 8Khz (high frequency) ZAPI controller provides smooth operation with fault detection and protection for low & high voltage and overheating.

### Features

- Regeneration : Direction change, Deceleration, Braking
- Efficiency of AC motor is higher than this of DC motor (10%)
- Enhanced Efficiency
- H (High) Mode, N (Normal) Mode, E (Economic) Mode
- Turtle Mode



# 35/40/45/50B-7 AC

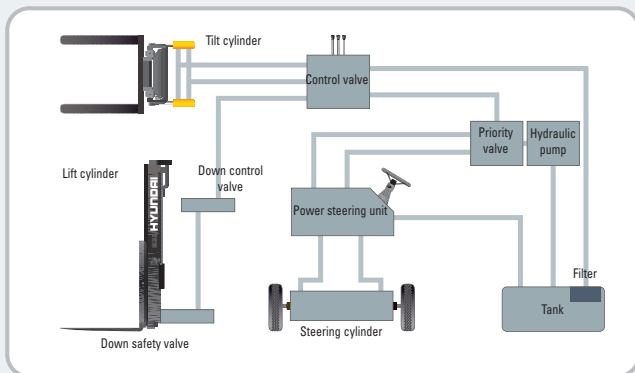
## Superior Power & Optimal Performance

Smooth run, efficient and ergonomic design, AC Control B series are built to meet your demands.



### Fork Safety Features

When the forks are lowered, a control-down valve maintains the adjusted speed. In case of sudden damage of hydraulic line, the down-safety valve prevents forks for dropping down.



### State-of-the-art Hydraulic System

The latest designed, large-capacity hydraulic system, including a low noise control valve, shortens reaction time during operation and increases efficiency and durability.



### Increased Mast tilting Angle

Utilizing the mast tilting angle of 6 degrees forward and 10 degrees backward, the operator can safely and rapidly perform loading and unloading jobs.



### Wet Disc Brakes

Brakes with multiple discs in oil bath require less maintenance, in order to save service costs.



### Casting Type Steering Axle

By adopting a casting type steering axle, durability and reliability are enhanced.

### Anti-Rollback System, Faster Travel Speed & Grade-ability

The ZAPI's anti-rollback system provides a safe ramp operation plus an exceptional ramp start capability. The powerful high-output motors provide greater acceleration, better grade-ability and faster travel speed on any tough terrain or slope.



### Travel Speed (MAX)

Model	km / h
35B-7	18
40B-7	18
45B-7	18
50B-7	18

### Grade-ability (MAX)

Model	%
35B-7	30
40B-7	28
45B-7	26
50B-7	24



### OPSS (Operator Presence Sensing System)

Mast tilting, lifting and lowering operation is not possible when the operator is not seated in normal position. (Option)





### Adjustable Steering Wheel

Steering wheel can be adjusted by a lever on the right-hand side for the most comfortable operator position.



### Easy Control Direction Lever

A single lever on the left side of the steering column gives the operator fast and easy control of direction. This allows the operator to remain in control of equipment.



### Multi-Functional Switch

Integrated multi-functional switch lever enables the driver to operate lights and horn conveniently.



### Prompt Response of Operating Control Levers

Only minimal operator's effort is required for precise, safe and productive control.



### High visibility for safe operation

The operator is able to work with increased safety and accuracy due to a wider view mast.



### Perfect Fit

An ergonomically designed operator's compartment enables the driver to select the most comfortable working position for increased productivity.



### Optimum Pedal Position & Non-slip Mat

Based on human engineering, the accelerator and brake pedals are optimally positioned for operator's convenience.

### Easily Adjustable Suspension Seat

An attractive and adjustable seat, based on a human engineering design, provides great comfort, safety and durability.

- Options : Seat belt, Arm rests, Hip restraint



# 35/40/45/50B-7 AC

## Comfortable Operation

A design based on human engineering relieves fatigue and increases operator's efficiency.



### AC Control System Features

- Excellent Controllability
  - Several performance modes according to working conditions
  - H (High) Mode, N (Normal) Mode, E (Economic) Mode
  - Turtle Mode
  - Slow rolling on ramp & ramp start
- Enhanced System Efficiency: Excellent regeneration & improved motor efficiency
- Lower maintenance costs: Less wear parts in heart of AC motor (no motor brushes or commutators)
- Enhanced durability by using a sealed AC motor

■ Photo may include optional equipment.



### Self - diagnosis LCD Monitor

The LCD monitor has a back-light system to provide a clear view of the system's operation in all circumstances. The monitor provides information about operation errors, system faults, battery

level, hour meter, speed, selected mode plus other functions. (Self diagnosis / User Password / Speed Unit)

### Keyboard Buttons

Operator can select performance modes easily according to working conditions.

### Console Box & Cup Holder

Additional storage spaces are located inside the operating space for operator's convenience.





## High Durability & Simple Design

An ideal arrangement of components ensures easy access and convenience for maintenance.



■ Photo may include optional equipment.



### Strong Overhead Guard

The safety overhead guard meets EEC and ANSI regulations and protects the operator during hazardous jobs.



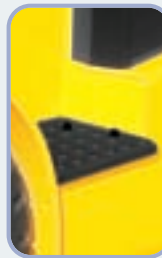
### Parking Brake

Toggle type parking brake requires less effort from the operator to set.



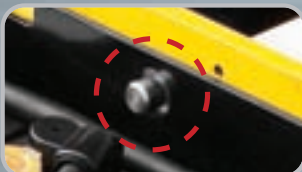
### Large Footboard & Hand Grip

Wide "open" step and a large hand grip ensure easy access to the operator's seat.

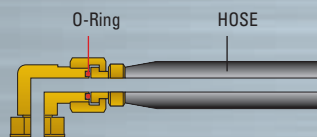


### Rear Safety Lamp

Rear combination lamps with directional indicators, rear lights and brake lights are positioned for a high level of safety.



### Battery Locking Device



### ORFS (O-Ring Face Seal)

ORFS type hose prevents hydraulic oil leakage.

### High quality AC motors

Enclosed motors prolong durability. Fewer wear parts in AC motor reduces maintenance costs and increases reliability.





# 35/40/45/50B-7 AC

## Easy Maintenance & Serviceability

Opening and closing of battery cover is made easy by using a gas-spring assist cylinder.



### Easy battery replacement

Battery change is made easy with swing-up compartment and slotted overhead guard.



### A centralized fuse box for easy inspection



### Oil Tank Port



### Steering Sensor



### Hydraulic motor



### Battery Disconnect Lever



### Easy to Check Brake Oil Level



### Bright Headlights & Rear Work Light



### DC-DC Converter

DC-DC converter, satisfied with UL & CE, with protection against short circuit, overload and reverse polarity.

# New 7 Series

## Mast Specifications (35/40/45B-7)

Mast Type	Overall Height (Lowered) (mm)	Maximum Fork Height (mm)	Free Lift (mm)		Tilt Angle (deg) Forward / Backward	Load Capacity without side shift at (500mm LC) (kg)			Load Capacity with side shift at (500mm LC) (kg)			Truck Weight (Unloaded) (kg)			
			With Backrest	Without Backrest		35B-7	40B-7	45B-7	35B-7	40B-7	45B-7	35B-7	40B-7	45B-7	
			35/40/45B-7	35/40/45B-7	35B/40/45B-7	35B/40/45B-7	35/40/45B-7	35B-7	40B-7	45B-7	35B-7	40B-7	45B-7	35B-7	40B-7
2 / Stage limited free lift	V270	2,075	2,720	120	120	6 / 10	3,500	4,000	4,500	3,500	4,000	4,500	6,176	6,407	6,621
	*V300	2,225	3,020	120	120	6 / 10	3,500	4,000	4,500	3,500	4,000	4,500	6,201	6,432	6,647
	V330	2,375	3,320	120	120	6 / 10	3,500	4,000	4,500	3,500	4,000	4,500	6,227	6,458	6,672
	V350	2,525	3,520	120	120	6 / 10	3,500	4,000	4,500	3,500	4,000	4,500	6,251	6,482	6,697
	V370	2,625	3,720	120	120	6 / 10	3,500	4,000	4,500	3,500	4,000	4,500	6,268	6,499	6,713
	V400	2,835	4,020	120	120	6 / 10	3,500	4,000	4,500	3,500	4,000	4,450	6,303	6,534	6,749
	V450	3,085	4,520	120	120	6 / 6	3,400	4,000	4,350	3,400	4,000	4,300	6,345	6,576	6,791
V500	3,335	5,020	120	120	6 / 6	3,300	3,850	4,200	3,300	3,850	4,150	6,388	6,619	6,834	
3 / Stage full free lift	TF370	2,025	3,730	812	1,139	6 / 6	3,250	3,850	4,350	3,250	3,850	4,250	6,477	6,708	6,923
	TF400	2,125	4,030	912	1,239	6 / 6	3,200	3,750	4,250	3,200	3,750	4,200	6,503	6,734	6,949
	TF430	2,225	4,330	1,012	1,339	6 / 6	3,100	3,700	4,150	3,100	3,700	4,100	6,528	6,759	6,975
	TF450	2,285	4,510	1,072	1,399	6 / 6	3,100	3,650	4,100	3,100	3,650	4,050	6,544	6,775	6,990
	TF470	2,375	4,720	1,162	1,489	6 / 6	3,050	3,600	4,050	3,050	3,600	4,000	6,567	6,798	7,014
	TF500	2,475	5,020	1,262	1,589	6 / 6	2,950	3,500	3,950	2,950	3,500	3,900	6,593	6,824	7,040
	TF550	2,855	5,520	1,442	1,769	6 / 6	2,850	3,400	3,850	2,850	3,400	3,800	6,644	6,875	7,092
TF600	2,835	6,030	1,622	1,949	6 / 6	2,750	3,300	3,700	2,750	3,300	3,650	6,684	6,915	7,131	

\* Standard

## Mast Specifications (50B-7)

Mast Type	Overall Height (Lowered) (mm)	Maximum Fork Height (mm)	Free Lift (mm)		Tilt Angle (deg)		Load Capacity without side shift at (500mm LC) (kg)	Load Capacity with side shift at (500mm LC) (kg)	Truck Weight (Unloaded) (kg)	
			With Backrest	Without Backrest	Forward	Backward				
			50B-7	50B-7	50B-7	50B-7	50B-7	50B-7	50B-7	50B-7
2 / Stage limited free lift	V260	2,080	2,620	120	120	6	10	4,990	4,990	7,440
	*V290	2,230	2,920	120	120	6	10	4,990	4,990	7,466
	V320	2,380	3,220	120	120	6	10	4,990	4,990	7,491
	V340	2,530	3,420	120	120	6	10	4,990	4,990	7,515
	V360	2,630	3,620	120	120	6	10	4,990	4,990	7,532
	V390	2,840	3,920	120	120	6	10	4,990	4,990	7,567
	V440	3,090	4,420	120	120	6	6	4,950	4,900	7,671
V490	3,340	4,920	120	120	6	6	4,800	4,750	7,713	
3 / Stage full free lift	TF360	2,030	3,662	807	1,074	6	6	4,950	4,900	7,717
	TF390	2,130	3,962	907	1,174	6	6	4,850	4,800	7,743
	TF420	2,230	4,262	1,007	1,274	6	6	4,750	4,700	7,769
	TF440	2,290	4,442	1,067	1,334	6	6	4,700	4,650	7,785
	TF460	2,380	4,652	1,157	1,424	6	6	4,650	4,600	7,808
	TF490	2,480	4,952	1,257	1,524	6	6	4,550	4,500	7,834
	TF540	2,660	5,452	1,437	1,704	6	6	4,400	4,350	7,885
TF590	2,840	5,962	1,617	1,884	6	6	4,250	4,200	7,925	

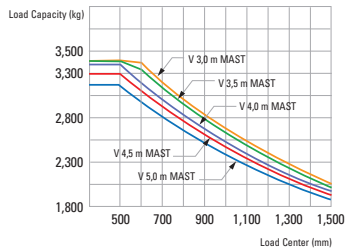
\* Standard



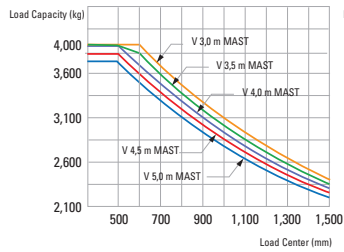
# 35/40/45/50B-7 AC

## Load Capacity

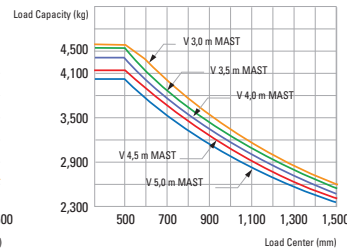
35B-7



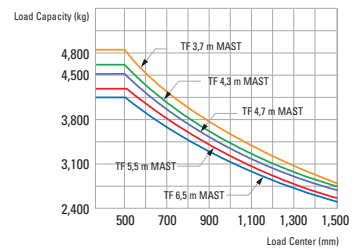
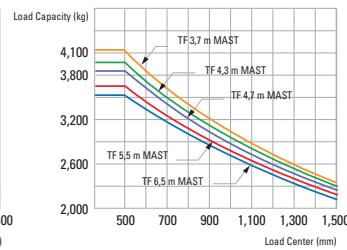
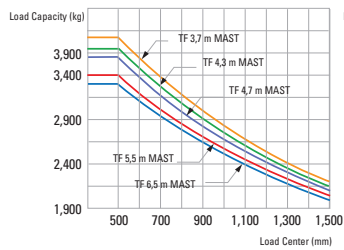
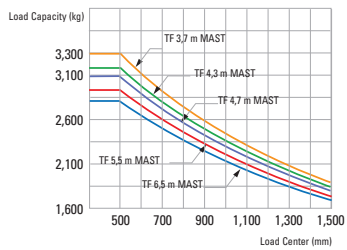
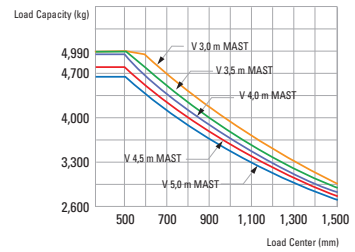
40B-7



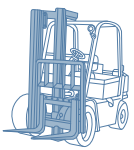
45B-7



50B-7



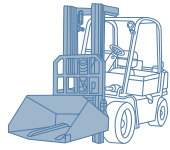
## Various Attachments



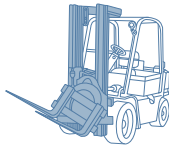
Side Shift



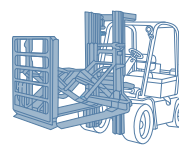
Hinged Forks



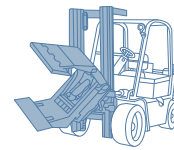
Hinged Bucket



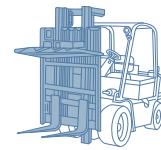
Rotating Forks



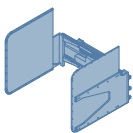
Push Pull



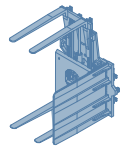
Rotating Roll Clamp



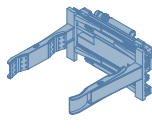
Load Stabilizer



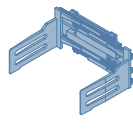
Carton Clamp



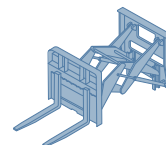
Pallet Invert



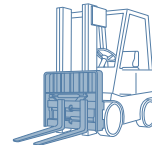
Drum Clamp



Bale Clamp



Load Extender



Fork Positioner

## Optional Items

• Forks (L x W x T) (mm)

- 35B-7: 1220 x 122 x 50 / 1370 x 122 x 50 / 1520 x 122 x 50 / 1670 x 122 x 50 / 1820 x 122 x 50 / 1970 x 122 x 50
- 40B-7: 1220 x 122 x 50 / 1370 x 122 x 50 / 1520 x 122 x 50 / 1670 x 122 x 50 / 1820 x 122 x 50 / 1970 x 122 x 50
- 45B-7: 1220 x 150 x 50 / 1370 x 150 x 50 / 1520 x 150 x 50 / 1670 x 150 x 50 / 1820 x 150 x 50 / 1970 x 150 x 50
- 50B-7: 1220 x 150 x 50 / 1370 x 150 x 50 / 1520 x 150 x 50 / 1670 x 150 x 50 / 1820 x 150 x 50 / 1970 x 150 x 50

• Masts

- 2 Stage Limited Free Lift
- 3 Stage Limited Free Lift

• Fork extenders

- 1800 / 2000 / 2200

• Hose - Reel

• Beacon

• Rear Work Lamp

• Cold Storage

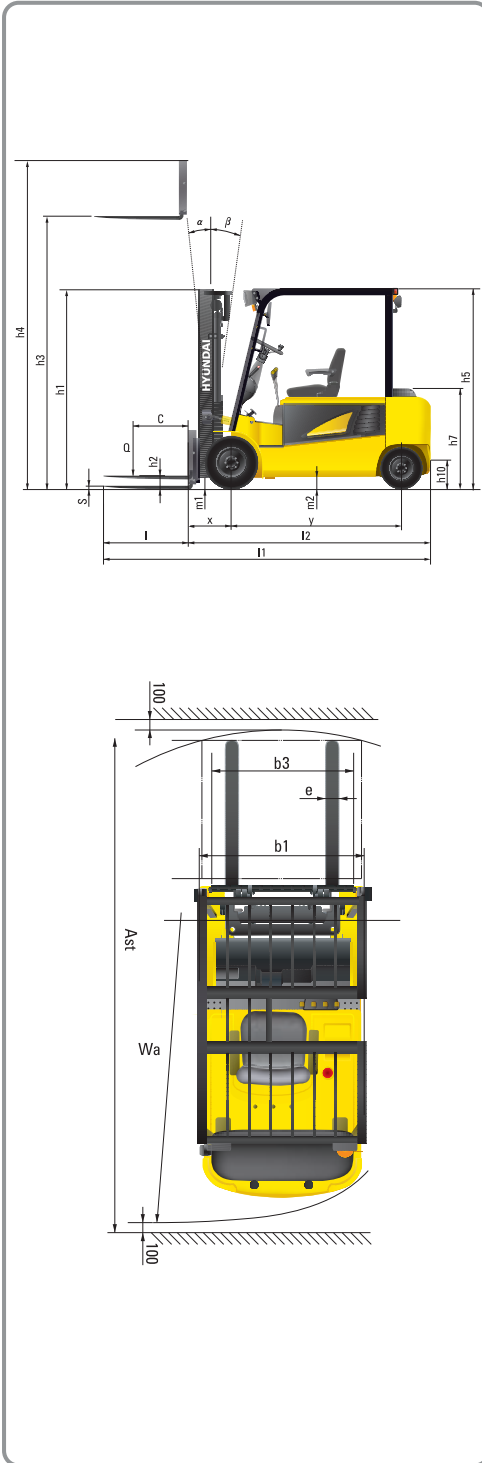
• Tires

- Pneumatic, Single
- Non-Marking, Single
- Pneumatic, Double
- Non-Marking, Double

• MCV

- 4 Spool

## Dimensions



## Specifications

### Identification

		HYUNDAI			
1. 1	Manufacturer	HYUNDAI			
1. 2	Type	35B-7	40B-7	45B-7	50B-7
1. 3	Drive : electric (battery or mains), diesel, petrol, fuel gas, manual	Electric	Electric	Electric	Electric
1. 4	Type of operation : hand, pedestrian, standing, seated, order - picker	Seated	Seated	Seated	Seated
1. 5	Load capacity (standard)	Q kg 3500	4000	4500	4990
1. 6	Load center distance	c mm 500	500	500	500
1. 8	Load distance, center of drive axle to forks	x mm 535	535	535	540
1. 9	Wheelbase	y mm 1855	2000	2000	2000

### Weights

2. 1	Service weight	kg 6415	6655	7020	7520
2. 2	Axle loading, loaded front / rear	kg 8934 / 981	9580 / 1075	10348 / 1173	11213 / 1297
2. 3	Axle loading, unloaded front / rear	kg 3481 / 2934	3510 / 3145	3519 / 3501	3628 / 3892

### Wheels, Chassis

3. 1	Tires : solid rubber (V), superelastic (SE), pneumatic (P), polyurethane (PE)	SE, P	SE, P	SE, P	SE, P
3. 2	Tires size, front ( $\phi$ x width)	250 - 15	250 - 15	250 - 15	28 x 12.5 - 15
3. 3	Tires size, rear ( $\phi$ x width)	21 x 8 - 9	21 x 8 - 9	21 x 8 - 9	21 x 8 - 9
3. 5	Wheels, number front / rear (x = driven wheels)	2 x / 2	2 x / 2	2 x / 2	2 x / 2
3. 6	Track width, front	mm 1141	1141	1141	1114
3. 7	Track width, rear	mm 1090	1090	1090	1090

### Basic Dimensions

4. 1	Mast / fork carriage tilt forward / backward ( $\alpha/\beta$ )	degrees	6 / 10	6 / 10	6 / 10	6 / 10
4. 2	Lowered mast height	h1 mm	2225	2225	2225	2230
4. 3	Free lift	h2 mm	120	120	120	120
4. 4	Lift height	h3 mm	3000	3000	3000	2900
4. 5	Extended mast height	h4 mm	4224	4224	4224	4146
4. 7	Overhead load guard (cab) height	h5 mm	2230	2320	2320	2320
4. 8	Seat height / Standing height	h7 mm	1166	1166	1166	1166
4. 12	Coupling height	h10 mm	460	460	460	460
4. 19	Overall length	l1 mm	3847	3992	4040	4100
4. 20	Length to face of forks	l2 mm	2777	2922	2970	3030
4. 21	Overall width	b1 mm	1370	1370	1370	1424
4. 22	Fork dimensions L x W x T	S x E x L mm	50 x 122 x 1070	50 x 122 x 1070	50 x 150 x 1070	50 x 150 x 1070
4. 23	Fork carriage ISO 2328, class / type A, B		III / A	III / A	III / A	IV / A
4. 24	Fork carriage width	b3 mm	1300	1300	1300	1300
4. 31	Ground clearance, loaded, under mast	m1 mm	160	160	160	165
4. 32	Ground clearance, centre of wheelbase	m2 mm	160	160	160	156
4. 33	Aisle width for pallets 1000 x 1200 crossways ( L x W)	Ast mm	4195	4350	4395	4445
4. 34	Aisle width for pallets 800 x 1200 length ways ( W x L)	Ast mm	3995	4150	4195	4245
4. 35	Turning radius	Wa mm	2460	2615	2660	2705
4. 36	Smallest pivot point distance	mm	-	-	-	-

### Performance Data

5. 1	Travel speed, loaded / unloaded (80 V)	km/h	18 / 18	18 / 18	18 / 18	18 / 18
5. 2	Lift speed, loaded / unloaded (80 V)	mm/sec	380 / 500	380 / 500	330 / 500	320 / 450
5. 3	Lowering speed, loaded / unloaded	mm/sec	550 / 520	550 / 520	550 / 520	500 / 430
5. 5	Drawbar pull, loaded / unloaded S2 60 min	N	-	-	-	-
5. 6	Max. drawbar pull, loaded / unloaded S2 5 min	N	28931 / 29122	28185 / 29075	28662 / 29003	28558 / 28469
5. 7	Gradient performance, loaded / unloaded S2 30 min	%	-	-	-	-
5. 8	Max. gradient performance, loaded / unloaded S2 5 min	%	30 / 26	28 / 26	26 / 24	23 / 24
5. 9	Acceleration time, loaded / unloaded		-	-	-	-
5. 10	Service brake		Hydraulic	Hydraulic	Hydraulic	Hydraulic

### E - Motor

6. 1	Drive motor rating S2 60 min (80V)	kW	8,1 x 2	8,1 x 2	8,1 x 2	8,1 x 2
6. 2	Pump motor rating at S3 - 15 % (80V)	kW	23,8	23,8	23,8	23,8
6. 4	Battery voltage, nominal capacity K5 (80V)	Ah	600	700	700	700
6. 5	Battery weight (min)	kg	1780	2095	2095	2095
	Battery compartment dimensions L / W / H	mm	1033 / 859 / 790	1033 / 859 / 790	1033 / 1004 / 790	1033 / 1004 / 790
6. 6	Type of drive control		AC	AC	AC	AC

Standard and optional equipment may vary. Contact your Hyundai dealer for more information. The machine shown may vary according to International standards. All US measurement are rounded off to nearest pound or inch. Materials and specifications are subject to change without notice.



Head Office(Sales Office)  
1 JEONHA-DONG, DONG-GU, ULSAN, KOREA Tel (82) (52) 202-7970, 7729 Fax (82) (52) 202-7979, 7720

U.S. Operation : Hyundai Construction Equipment U.S.A., Inc.  
955 ESTES AVENUE, ELK GROVE VILLAGE IL.,60007 Tel (1) 847-437-3333 Fax (1) 847-437-3574

European Operation : Hyundai Heavy Industries Europe N.V.  
VOSSENDAAL 11, 2440 GEEL, BELGIUM Tel (32) 14-562200 Fax (32) 14-593405-06

India Operation : Hyundai Construction Equipment India Private Limited  
303, 3rd Floor, Siddhivinayak Aurum, 33/1/1/2 Vadgaon Sheri,  
Vinam Nagar, Pune 411 014 India Tel 91-20-4003-8160 Fax 91-20-4003-8163

PLEASE CONTACT

www.hyundai.eu

EN - 2008. 06 Rev 0.