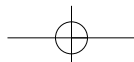


■ Photo may include optional equipment.

We build a better future

22/25/30/32B-7AC 22/25/30BHA-7AC

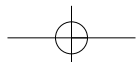
FORKLIFT TRUCKS Environmental - Friendly





02 HYUNDAI FORKLIFT

■ Photo may include optional equipment.



New Criterion of Forklift Trucks

Hyundai introduces a new line of 7-series battery forklift trucks.
Excellent power and performance makes your business more profitable.





The New AC Control B/BHA Series

Designed with a durable frame and built to offer excellent stability and a smooth ride, AC Control B/BHA Series trucks are real workhorses.



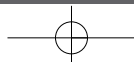
Photo may include optional equipment.

High Technology ZAPI Controller

The efficient, almost noiseless, 8Khz (high frequency) ZAPI controller provides smooth operation with fault detection and protection for low & high voltage and overheating.

Features

- Regeneration : Direction change, Deceleration, Braking
- Efficiency of AC motor is higher than this of DC motor (10%)
- Enhanced Efficiency
- H (High) Mode, N (Normal) Mode, E (Economic) Mode
- Turtle Mode



22/25/30BHA-7 AC

Superior Power & Optimal Performance

Smooth run, efficient and ergonomic design, AC Control B/BHA series are built to meet your demands.

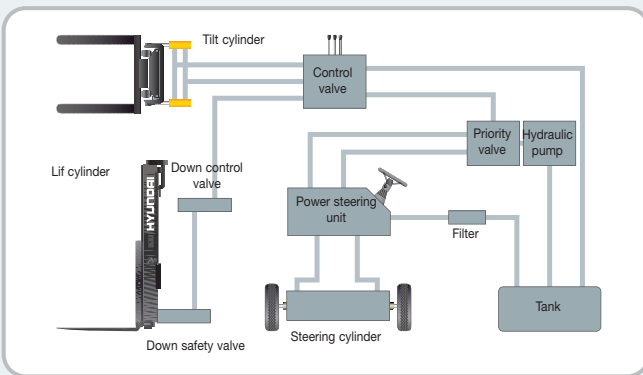


Increased mast tilting angle

Utilizing the mast tilting angle of 6 degrees forward and 10 degrees backward gives the operator a safe and rapid platform for loading and unloading jobs.

Fork Safety Features

When the forks are lowered, a control-down valve maintains the adjusted speed. In case of sudden damage of an hydraulic line, the down-safety valve prevents forks for dropping down.



State-of-the-art Hydraulic System

The latest designed, large-capacity hydraulic system, including a low noise control valve, shortens reaction time during operation and increases efficiency and durability.

Anti-Rollback System, Faster Travel Speed & Grade-ability

The ZAPI's anti-rollback system provides a safe ramp operation plus an exceptional ramp start capability. The powerful high-output motors provide greater acceleration, better grade-ability and faster travel speed on any tough terrain or slope.



Dual Drive System

Smaller outside turning radius by using a dual drive system, results in a higher efficiency in narrow aisles.



Wet Disc Brakes

Wet disc brakes with multiple discs require less maintenance and reduce service costs.



Casting Type Steering Axle

Implementing a casting type steering axle, enhances durability and reliability.



OPSS System

Travel Speed (MAX)

Model	km / h	Model	km / h
22BHA-7	19	22B-7	18
25BHA-7	19	25B-7	18
30BHA-7	19	30B-7	18
		32B-7	18

Grade-ability (MAX)

Model	%	Model	%
22BHA-7	29	22B-7	38
25BHA-7	26	25B-7	34
30BHA-7	25	30B-7	29
		32B-7	28



Adjustable steering wheel

The steering wheel can be adjusted by a lever on the left-hand side to improve operators comfort.



Easy Control Direction Lever

A single lever on the left side of the steering column gives the operator fast and easy control of direction.



Multi-functional lever

A multi-functional lever gives easy access to lights and horn.



Prompt Response of Operating Control Levers

Only minimal operator's effort is required for precise, safe and productive control.



High visibility for safe operation

The operator is able to work with increased safety and accuracy due to a wider view mast.



Perfect Fit

An ergonomically designed operator's compartment enables the driver to select the most comfortable working position for increased productivity.



Optimum Pedal Position & Non-slip Mat

Based on human engineering, the accelerator and brake pedals are optimally positioned for operator's convenience.

Easily Adjustable Suspension Seat

An attractive and adjustable seat, based on a human engineering design, provides great comfort, safety and durability.

- Options : Seat belt, Arm rests, Hip restraint



22/25/30/32B-7 AC

Comfortable Operation

A design based on human engineering relieves fatigue and increases operator's efficiency.



AC Control System Features

- Excellent Controllability
 - Several performance modes according to working conditions
 - H (High) Mode, N (Normal) Mode, E (Economic) Mode
 - Turtle Mode
 - Slow rolling on ramp & ramp start
- Enhanced System Efficiency: Excellent regeneration & improved motor efficiency
- Lower maintenance costs: Less wear parts in heart of AC motor (no motor brushes or commutators)
- Enhanced durability by using a sealed AC motor

■ Photo may include optional equipment.



Self - diagnosis LCD Monitor

The LCD monitor has a back-light system to provide a clear view of the system's operation in all circumstances. The monitor provides information about operation errors, system faults, battery level, hour meter, speed, selected mode plus other functions. (Self diagnosis / User Password / Speed Unit)

Keyboard Buttons

The operator can select performance modes easily according to working conditions.

Console Box & Cup Holder

Additional storage spaces are located inside the operating space for operator's convenience.



High Durability & Simple Design

An ideal arrangement of components ensures easy access and convenience for maintenance.



■ Photo may include optional equipment.

Heavy Duty Single Frame

Designed on the basis of accurate structural analysis, a heavy duty single type frame guarantees durability and safety.



Strong Overhead Guard

The safety overhead guard meets EEC and ANSI regulations and protects the operator during hazardous jobs.



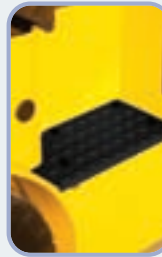
Parking Brake

Toggle type parking brake requires less effort from the operator to set.



Large Footboard & Hand Grip

Wide "open" step and a large hand grip ensure easy access to the operator's seat.

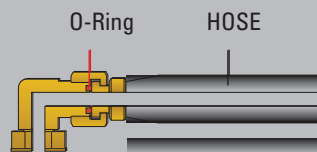


Rear Safety Lamp

Rear combination lamps with directional indicators, rear lights and brake lights are positioned for a high level of safety.



Battery Locking Device



ORFS (O-Ring Face Seal)

ORFS type hose prevents hydraulic oil leakage.

High quality AC motors

Enclosed motors prolong durability. Fewer wear parts in the AC motor reduce maintenance costs and increase reliability.



22/25/30BHA-7 AC

Easy Maintenance & Serviceability

Battery change is made easy with a swing-up compartment and a slotted overhead guard. Opening and closing of the battery cover is made easy by using a gas-spring assisted cylinder.



Easy battery replacement

Battery change is made easy with swing-up compartment and slotted overhead guard.



A centralized fuse box for easy inspection



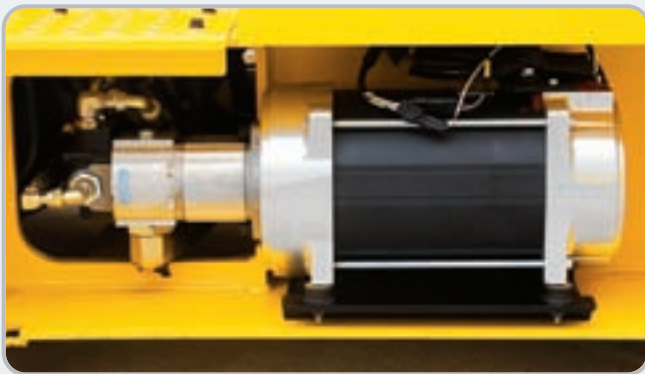
Oil Tank Port



Steering Sensor



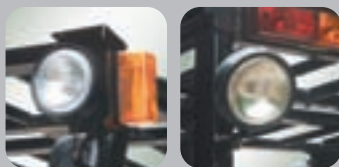
Easy to Check Brake Oil Level



Hydraulic motor



Battery Disconnect Lever



Bright Headlights & Rear Work Light



DC-DC Converter

DC-DC converter, satisfied with UL & CE, with protection against short circuit, overload and reverse polarity.

New 7 Series

Mast Specifications (22B-7)

Mast Type	Maximum Fork Height (mm)	Overall Height (Lowered) (mm)	Free Lift (mm)		Tilt Angle (degree) Forward / Backward	Load Capacity without side shift at (500mm LC) (kg)	Load Capacity with side shift at (500mm LC) (kg)	Truck Weight (Unloaded) (kg)	
			With Backrest	Without Backrest					
			22B-7	22B-7					
2 / Stage limited free lift	V300	3,000	2,002	115	115	6 / 10	2,200	2,200	3,921
	* V330	3,300	2,152	115	115	6 / 10	2,200	2,200	3,940
	V350	3,500	2,252	115	115	6 / 10	2,200	2,140	3,957
	V370	3,700	2,402	115	115	6 / 10	2,170	2,110	3,979
	V400	4,000	2,552	115	115	6 / 10	2,120	2,060	4,001
	V430	4,300	2,702	115	115	6 / 6	2,070	2,010	4,050
	V450	4,500	2,852	115	115	6 / 6	2,040	1,980	4,080
	V470	4,700	2,952	115	115	6 / 6	2,010	1,950	4,094
	V500	5,000	3,102	115	115	6 / 6	1,970	1,910	4,116
3 / Stage full free lift	TF370	3,700	1,802	622	1,179	6 / 6	2,100	2,100	4,067
	TF400	4,000	1,902	722	1,279	6 / 6	2,065	2,000	4,087
	TF430	4,300	2,002	822	1,379	6 / 6	2,020	1,960	4,108
	TF450	4,500	2,102	922	1,479	6 / 6	1,990	1,930	4,129
	TF470	4,700	2,152	972	1,529	6 / 6	1,960	1,900	4,140
	TF500	5,000	2,252	1,072	1,629	6 / 6	1,920	1,860	4,165
	TF550	5,500	2,452	1,272	1,829	6 / 6	1,850	1,790	4,204
	TF600	6,000	2,652	1,472	2,029	6 / 6	1,790	1,730	4,241
	TF650	6,500	2,852	1,672	2,229	3 / 3	980	920	4,279

* Standard

Mast Specifications (25B-7)

Mast Type	Maximum Fork Height (mm)	Overall Height (Lowered) (mm)	Free Lift (mm)		Tilt Angle (degree) Forward / Backward	Load Capacity without side shift at (500mm LC) (kg)	Load Capacity with side shift at (500mm LC) (kg)	Truck Weight (Unloaded) (kg)	
			With Backrest	Without Backrest					
			25B-7	25B-7					
2 / Stage limited free lift	V300	3,000	2,002	115	115	6 / 10	2,500	2,500	4,271
	* V330	3,300	2,152	115	115	6 / 10	2,500	2,500	4,290
	V350	3,500	2,252	115	115	6 / 10	2,500	2,500	4,307
	V370	3,700	2,402	115	115	6 / 10	2,500	2,450	4,329
	V400	4,000	2,552	115	115	6 / 10	2,500	2,420	4,351
	V430	4,300	2,702	115	115	6 / 6	2,440	2,380	4,400
	V450	4,500	2,852	115	115	6 / 6	2,400	2,340	4,430
	V470	4,700	2,952	115	115	6 / 6	2,360	2,300	4,444
	V500	5,000	3,102	115	115	6 / 6	2,310	2,250	4,466
3 / Stage full free lift	TF370	3,700	1,802	622	1,179	6 / 6	2,500	2,500	4,417
	TF400	4,000	1,902	722	1,279	6 / 6	2,440	2,380	4,437
	TF430	4,300	2,002	822	1,379	6 / 6	2,380	2,320	4,458
	TF450	4,500	2,102	922	1,479	6 / 6	2,350	2,290	4,479
	TF470	4,700	2,152	972	1,529	6 / 6	2,310	2,250	4,490
	TF500	5,000	2,252	1,072	1,629	6 / 6	2,260	2,200	4,515
	TF550	5,500	2,452	1,272	1,829	6 / 6	2,180	2,120	4,554
	TF600	6,000	2,652	1,472	2,029	6 / 6	2,110	2,050	4,591
	TF650	6,500	2,852	1,672	2,229	3 / 3	1,200	1,140	4,629

* Standard

Optional Items (22/25/30/32B-7)

• **Masts**

3 Stage Full Free Lift (TF)

• **Forks (mm)**

22/25B-7

900 mm; 1,000 mm; 1,050 mm (std); 1,200 mm; 1,350 mm; 1,500 mm; 1,650 mm; 1,800 mm

30/32B-7

900 mm; 1,050 mm (std); 1,150 mm; 1,200 mm; 1,350 mm; 1,500 mm; 1,650 mm; 1,800 mm; 2,120 mm

• **Fork extenders (mm)**

1,499 mm; 1,699 mm; 1,798 mm

• **Tires**

Non-marking, Pneumatic

• **Cold Storage**

• **Dual Voltage (36/48 V)**

• **UL EE**

• **Finger Tip Control**

22/25/30/32B-7 AC

Mast Specifications (30B-7)

Mast Type	Maximum Fork Height (mm)	Overall Height (Lowered) (mm)	Free Lift (mm)		Tilt Angle (degree) Forward / Backward	Load Capacity without side shift at (500mm LC) (kg)	Load Capacity with side shift at (500mm LC) (kg)	Truck Weight (Unloaded) (kg)	
			With Backrest	Without Backrest					
			30B-7	30B-7					
2 / Stage limited free lift	V300	3,000	2,002	115	115	6 / 10	3,000	3,000	4,639
	* V330	3,300	2,152	115	115	6 / 10	3,000	3,000	4,660
	V350	3,500	2,252	115	115	6 / 10	3,000	2,950	4,679
	V370	3,700	2,402	115	115	6 / 10	3,000	2,900	4,702
	V400	4,000	2,552	115	115	6 / 10	3,000	2,850	4,726
	V430	4,300	2,702	115	115	6 / 6	2,980	2,830	4,776
	V450	4,500	2,852	115	115	6 / 6	2,930	2,780	4,807
	V470	4,700	2,952	115	115	6 / 6	2,890	2,740	4,823
	V500	5,000	3,102	115	115	6 / 6	2,830	2,680	4,847
3 / Stage full free lift	TF370	3,700	1,802	622	1,107	6 / 6	3,000	2,850	4,803
	TF400	4,000	1,902	722	1,207	6 / 6	2,960	2,810	4,824
	TF430	4,300	2,002	822	1,307	6 / 6	2,900	2,750	4,868
	TF450	4,500	2,102	922	1,407	6 / 6	2,860	2,710	4,873
	TF470	4,700	2,152	972	1,457	6 / 6	2,830	2,680	4,885
	TF500	5,000	2,252	1,072	1,557	6 / 6	2,770	2,620	4,910
	TF550	5,500	2,452	1,272	1,757	6 / 6	2,670	2,520	4,953
	TF600	6,000	2,652	1,472	1,957	6 / 6	2,580	2,430	4,995
	TF650	6,500	2,852	1,672	2,157	3 / 3	1,480	1,330	5,051

* Standard

Mast Specifications (32B-7)

Mast Type	Maximum Fork Height (mm)	Overall Height (Lowered) (mm)	Free Lift (mm)		Tilt Angle (degree) Forward / Backward	Load Capacity without side shift at (500mm LC) (kg)	Load Capacity with side shift at (500mm LC) (kg)	Truck Weight (Unloaded) (kg)	
			With Backrest	Without Backrest					
			32B-7	32B-7					
2 / Stage limited free lift	V300	2,900	2,002	115	115	6 / 10	3,200	3,200	4,835
	* V330	3,200	2,152	115	115	6 / 10	3,200	3,200	4,856
	V350	3,400	2,252	115	115	6 / 10	3,200	3,150	4,875
	V370	3,700	2,402	115	115	6 / 10	3,200	3,100	4,899
	V400	4,000	2,552	115	115	6 / 10	3,200	3,050	4,922
	V430	4,300	2,702	115	115	6 / 6	3,180	3,030	4,973
	V450	4,500	2,852	115	115	6 / 6	3,130	2,980	5,005
	V470	4,700	2,952	115	115	6 / 6	3,080	2,930	5,021
	V500	5,000	3,102	115	115	6 / 6	3,020	2,870	5,045
3 / Stage full free lift	TF370	3,700	1,852	672	1,062	6 / 6	3,200	3,050	5,036
	TF400	4,000	1,952	772	1,162	6 / 6	3,150	3,000	5,058
	TF430	4,300	2,052	872	1,262	6 / 6	3,080	2,930	5,083
	TF450	4,500	2,152	972	1,362	6 / 6	3,040	2,890	5,107
	TF470	4,700	2,202	1,022	1,412	6 / 6	3,000	2,850	5,120
	TF500	5,000	2,302	1,122	1,512	6 / 6	2,940	2,790	5,146
	TF550	5,500	2,502	1,322	1,712	6 / 6	2,840	2,690	5,191
	TF600	6,000	2,702	1,522	1,912	6 / 6	2,740	2,590	5,234
	TF650	6,500	2,902	1,722	2,112	3 / 3	1,585	1,435	5,279

* Standard

Mast Specifications (22BHA-7)

Mast Type	Maximum Fork Height (mm)	Overall Height (Lowered) (mm)	Free Lift (mm)		Tilt Angle (degree) Forward / Backward	Load Capacity without side shift at (500mm LC) (kg)	Load Capacity with side shift at (500mm LC) (kg)	Truck Weight (Unloaded) (kg)	
			With Backrest	Without Backrest					
			22BHA-7	22BHA-7					
2 / Stage limited free lift	V300	3,000	2,002	115	115	6 / 8	2,200	2,200	4,175
	* V330	3,300	2,152	115	115	6 / 8	2,200	2,200	4,194
	V350	3,500	2,252	115	115	6 / 8	2,200	2,200	4,211
	V370	3,700	2,402	115	115	6 / 8	2,200	2,170	4,233
	V400	4,000	2,552	115	115	6 / 8	2,200	2,120	4,255
	V430	4,300	2,702	115	115	6 / 6	2,170	2,090	4,304
	V450	4,500	2,852	115	115	6 / 6	2,140	2,060	4,334
	V470	4,700	2,952	115	115	6 / 6	2,110	2,030	4,348
	V500	5,000	3,102	115	115	6 / 6	2,060	1,980	4,370
3 / Stage full free lift	TF370	3,700	1,802	1,179	622	6 / 6	2,200	2,120	4,321
	TF400	4,000	1,902	1,279	722	6 / 6	2,160	2,080	4,341
	TF430	4,300	2,002	1,379	822	6 / 6	2,120	2,040	4,362
	TF450	4,500	2,102	1,479	922	6 / 6	2,080	2,000	4,383
	TF470	4,700	2,152	1,529	972	6 / 6	2,060	1,980	4,394
	TF500	5,000	2,252	1,629	1,072	6 / 6	2,010	1,930	4,419
	TF550	5,500	2,452	1,829	1,272	6 / 6	1,940	1,860	4,458
	TF600	6,000	2,652	2,029	1,472	6 / 6	1,870	1,790	4,495
	TF650	6,500	2,852	2,229	1,672	3 / 3	1,040	960	4,533

* Standard

Mast Specifications (25BHA-7)

Mast Type	Maximum Fork Height (mm)	Overall Height (Lowered) (mm)	Free Lift (mm)		Tilt Angle (degree) Forward / Backward	Load Capacity without side shift at (500mm LC) (kg)	Load Capacity with side shift at (500mm LC) (kg)	Truck Weight (Unloaded) (kg)	
			With Backrest	Without Backrest					
			25BHA-7	25BHA-7					
2 / Stage limited free lift	V300	3,000	2,002	115	115	6 / 8	2,500	2,500	4,415
	* V330	3,300	2,152	115	115	6 / 8	2,500	2,500	4,434
	V350	3,500	2,252	115	115	6 / 8	2,500	2,500	4,451
	V370	3,700	2,402	115	115	6 / 8	2,500	2,450	4,473
	V400	4,000	2,552	115	115	6 / 8	2,500	2,420	4,495
	V430	4,300	2,702	115	115	6 / 6	2,460	2,380	4,544
	V450	4,500	2,852	115	115	6 / 6	2,420	2,340	4,574
	V470	4,700	2,952	115	115	6 / 6	2,380	2,300	4,588
	V500	5,000	3,102	115	115	6 / 6	2,330	2,250	4,610
3 / Stage full free lift	TF370	3,700	1,802	1,179	622	6 / 6	2,500	2,420	4,561
	TF400	4,000	1,902	1,279	722	6 / 6	2,440	2,360	4,581
	TF430	4,300	2,002	1,379	822	6 / 6	2,380	2,300	4,602
	TF450	4,500	2,102	1,479	922	6 / 6	2,350	2,270	4,623
	TF470	4,700	2,152	1,529	972	6 / 6	2,310	2,230	4,634
	TF500	5,000	2,252	1,629	1,072	6 / 6	2,260	2,180	4,659
	TF550	5,500	2,452	1,829	1,272	6 / 6	2,180	2,100	4,698
	TF600	6,000	2,652	2,029	1,472	6 / 6	2,110	2,030	4,735
	TF650	6,500	2,852	2,229	1,672	3 / 3	1,200	1,120	4,773

* Standard

22/25/30BHA-7 AC

Mast Specifications (30BHA-7)

Mast Type	Maximum Fork Height (mm)	Overall Height (Lowered) (mm)	Free Lift (mm)		Tilt Angle (degree) Forward / Backward	Load Capacity without side shift at (500mm LC) (kg)	Load Capacity with side shift at (500mm LC) (kg)	Truck Weight (Unloaded) (kg)	
			With Backrest	Without Backrest					
			30BHA-7	30BHA-7					
2 / Stage limited free lift	V300	3,000	2,002	115	115	6 / 8	3,000	3,000	4,874
	* V330	3,300	2,152	115	115	6 / 8	3,000	3,000	4,895
	V350	3,500	2,252	115	115	6 / 8	3,000	3,000	4,914
	V370	3,700	2,402	115	115	6 / 8	3,000	2,900	4,937
	V400	4,000	2,552	115	115	6 / 8	3,000	2,850	4,961
	V430	4,300	2,702	115	115	6 / 6	2,930	2,780	5,011
	V450	4,500	2,852	115	115	6 / 6	2,890	2,740	5,042
	V470	4,700	2,952	115	115	6 / 6	2,850	2,700	5,058
	V500	5,000	3,102	115	115	6 / 6	2,790	2,640	5,082
3 / Stage full free lift	TF370	3,700	1,802	1,107	622	6 / 6	3,000	2,850	5,038
	TF400	4,000	1,902	1,207	722	6 / 6	2,920	2,770	5,059
	TF430	4,300	2,002	1,307	822	6 / 6	2,850	2,700	5,103
	TF450	4,500	2,102	1,407	922	6 / 6	2,810	2,660	5,108
	TF470	4,700	2,152	1,457	972	6 / 6	2,780	2,630	5,120
	TF500	5,000	2,252	1,557	1,072	6 / 6	2,720	2,570	5,145
	TF550	5,500	2,452	1,757	1,272	6 / 6	2,620	2,470	5,188
	TF600	6,000	2,652	1,957	1,472	6 / 6	2,540	2,390	5,230
	TF650	6,500	2,852	2,157	1,672	3 / 3	1,450	1,300	5,286

* Standard

Optional Items (22/25/30BHA-7)

• **Masts**

- 3 Stage Limited Free Lift (V)
- 3 Stage Full Free Lift (TF)

• **Forks (mm)**

22BHA/25BHA

900 mm; 1,000 mm; 1,200 mm; 1,350 mm; 1,500 mm; 1,800 mm

30BHA

900 mm; 1,150 mm; 1,200 mm; 1,350 mm; 1,500 mm; 1,650 mm; 1,800 mm; 2,120 mm

• **Fork extenders (mm)**

22BHA/25BHA

1,300 mm; 1,500 mm; 1,700 mm; 1,800 mm

30BHA

1,500 mm; 1,700 mm; 1,800 mm

• **Side Shift**

• **MCV**

4 Spool

• **Finger Tip Control**

• **Cold Storage**

• **Beacon Lamp**

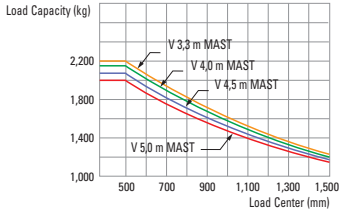
• **Rear Work Lamp**

• **Tires**

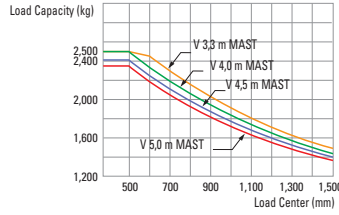
Non-marking, Pneumatic

Load Capacity (22/25/30/32B-7)

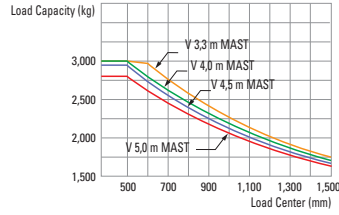
22B-7



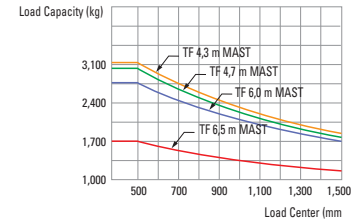
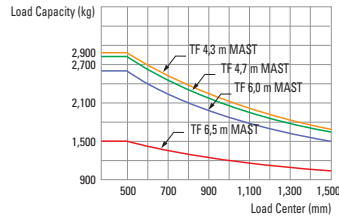
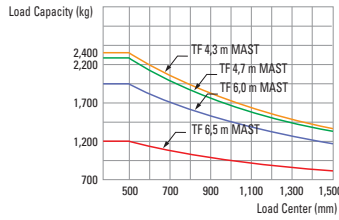
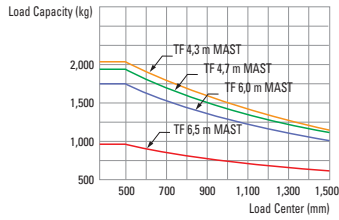
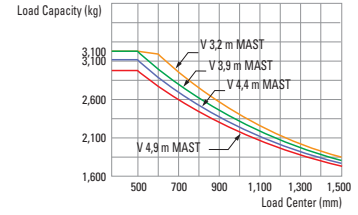
25B-7



30B-7

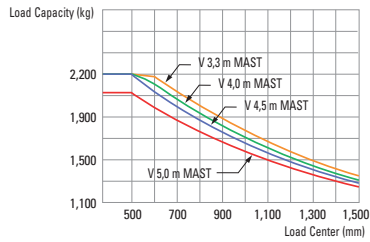


32B-7

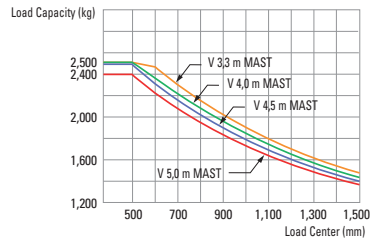


Load Capacity (22/25/30/32B-7)

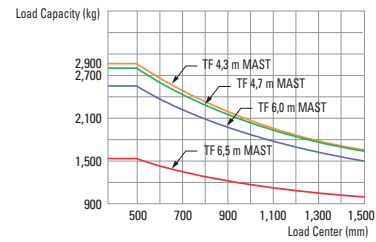
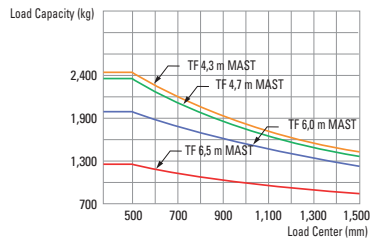
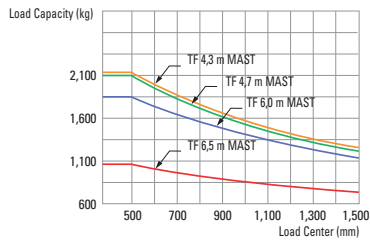
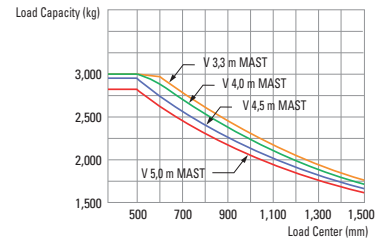
22BHA-7



25BHA-7



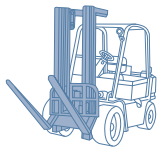
30BHA-7



Various Attachments



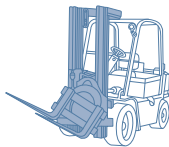
Side Shift



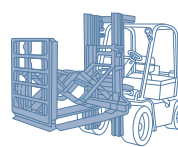
Hinged Forks



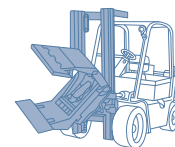
Hinged Bucket



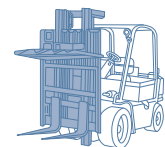
Rotating Forks



Push Pull



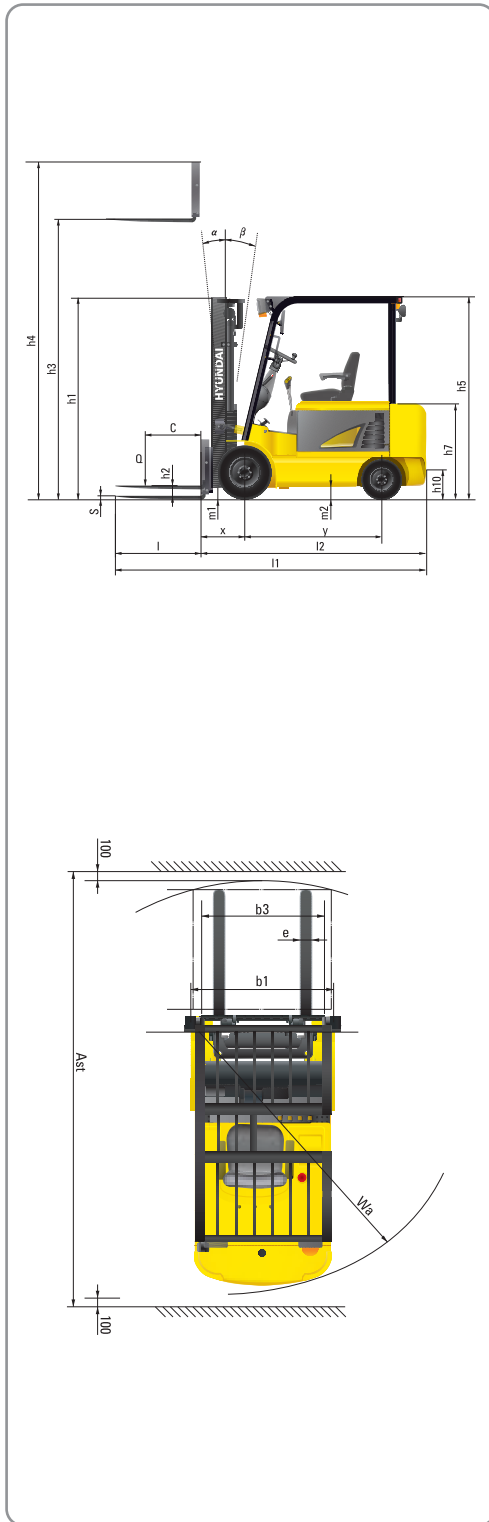
Rotating Roll Clamp



Load Stabilizer

22/25/30BHA-7 AC

Dimensions



Specifications 22/25/30/32B-7

Identification

1.1	Manufacturer					
1.2	Type	22B-7	25B-7	30B-7	32B-7	
1.3	Drive : electric (battery or mains), diesel, petrol, fuel gas, manual	Electric	Electric	Electric	Electric	
1.4	Type of operation : hand, pedestrian, standing, seated, order - picker	Seated	Seated	Seated	Seated	
1.5	Load capacity (standard)	Q kg	2,200	2,500	3,000	3,200
1.6	Load center distance	c mm	500	500	500	500
1.8	Load distance, center of drive axle to forks	x mm	470	470	473	473
1.9	Wheelbase	y mm	1,400	1,400	1,560	1,560

Weights

2.1	Service weight	kg	3,940	4,290	4,660	4,856
2.2	Axle loading, loaded front / rear	kg	5,451 / 689	5,684 / 896	6,701 / 959	7,015 / 1041
2.3	Axle loading, unloaded front / rear	kg	1,727 / 2,213	1,662 / 2,628	1,830 / 2,830	1,819 / 3,037

Wheels, Chassis

3.1	Tires : solid rubber (V), superelastic (SE), pneumatic (P), polyurethane (PE)	SE, P	SE, P	SE, P	SE, P
3.2	Tires size, front (φ x width)	23 x 9 - 10	23 x 9 - 10	23 x 9 - 10	23 x 9 - 10
3.3	Tires size, rear (φ x width)	18 x 7 - 8	18 x 7 - 8	18 x 7 - 8	18 x 7 - 8
3.5	Wheels, number front / rear (x = driven wheels)	2 x / 2	2 x / 2	2 x / 2	2 x / 2
3.6	Track width, front	mm	993	993	993
3.7	Track width, rear	mm	980	980	980

Basic Dimensions

4.1	Mast / fork carriage tilt forward / backward (α/β)	degrees	6 / 10	6 / 10	6 / 10	6 / 10
4.2	Lowered mast height	h1 mm	2,152	2,152	2,152	2152
4.3	Free lift	h2 mm	115	115	115	115
4.4	Lift height	h3 mm	3,300	3,300	3,300	3,200
4.5	Extended mast height	h4 mm	4,485	4,485	4,485	4,385
4.7	Overhead load guard (cab) height	h5 mm	2,220	2,220	2,230	2,230
4.8	Seat height / Standing height	h7 mm	1,180	1,180	1,180	1,180
4.12	Coupling height	h10 mm	325	325	325	325
4.19	Overall length	l1 mm	3,320	3,375	3,592	3,612
4.20	Length to face of forks	l2 mm	2,270	2,325	2,542	2,562
4.21	Overall width	b1 mm	1,200	1,200	1,200	1,200
4.22	Fork dimensions	S x E x L mm	45 x 100 x 1,050		45 x 125 x 1,050	
4.23	Fork carriage ISO 2328, class / type A, B		II / A	II / A	III / A	III / A
4.24	Fork carriage width	b3 mm	1,022	1,022	1,037	1,037
4.31	Ground clearance, loaded, under mast	m1 mm	107	107	107	107
4.32	Ground clearance, centre of wheelbase	m2 mm	130	130	130	130
4.33	Aisle width for pallets 1000 x 1200 crossways (LxW)	Ast mm	3,560	3,595	3,800	3,820
4.34	Aisle width for pallets 800 x 1200 length ways (WxL)	Ast mm	3,360	3,395	3,600	3,620
4.35	Turning radius	Wa mm	1,865	1,900	2,120	2,120
4.36	Smallest pivot point distance	mm	-	-	-	-

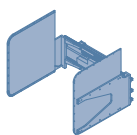
Performance Data

5.1	Travel speed, loaded / unloaded 48 V	km/h	17 / 18	17 / 18	17 / 18	17 / 18
	36V		-	-	-	-
5.2	Lift speed, loaded / unloaded 48 V	mm/sec	410 / 610	410 / 610	340 / 500	330 / 500
	36V		-	-	-	-
5.3	Lowering speed, loaded / unloaded	mm/sec	500 / 450	500 / 450	500 / 450	500 / 450
5.5	Drawbar pull, loaded / unloaded S2 60 min	N	-	-	-	-
5.6	Max. drawbar pull, loaded / unloaded S2 5 min	N	18,098 / 17,774	18,098 / 17,677	17,972 / 17,664	17,985 / 17,615
5.7	Gradient performance, loaded / unloaded S2 30 min	%	-	-	-	-
5.8	Max. gradient performance, loaded / unloaded S2 5 min	%	31 / 23.4	27.8 / 21.3	24.1 / 22.2	23.0 / 22.2
5.9	Acceleration time, loaded / unloaded		-	-	-	-
5.10	Service brake		Hydraulic	Hydraulic	Hydraulic	Hydraulic

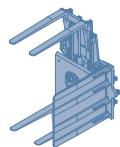
E - Motor

6.1	Drive motor rating S2 60 min 48 V	kW	7.8 x 2	7.8 x 2	7.8 x 2	7.8 x 2
	36V		-	-	-	-
6.2	Pump motor rating at S3 - 15 % 48 V	kW	18	18	18	18
	36V		-	-	-	-
6.4	Battery voltage, nominal capacity K5 48 V	V / Ah	660	715	740	740
	36V		-	-	-	-
6.5	Battery weight (min)	kg	1,040	1,100	1,270	1,270
	Battery compartment dimensions L / W / H	mm	1,066 / 796 / 537		1,066 / 990 / 537	
6.6	Type of drive control		AC	AC	AC	AC

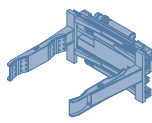
Various Attachments



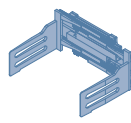
Carton Clamp



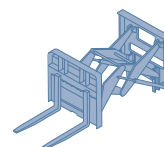
Pallet Invert



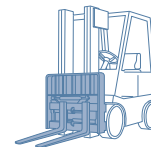
Drum Clamp



Bale Clamp

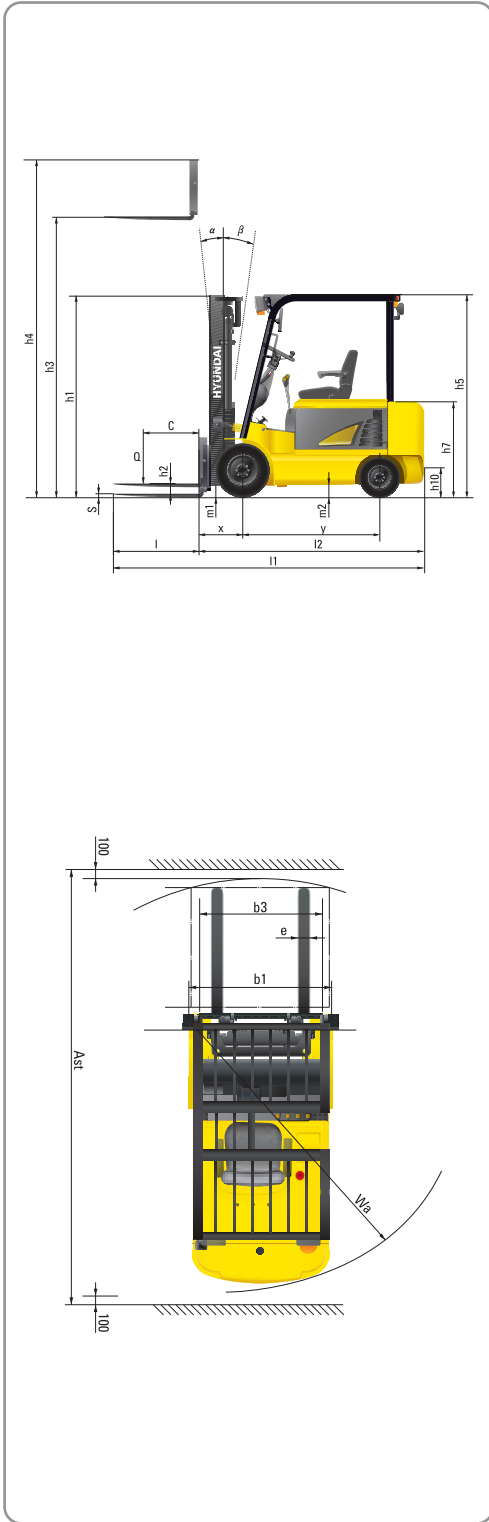


Load Extender



Fork Positioner

Dimensions



Specifications 22/25/30BHA-7

Identification

		HYUNDAI		
1.1	Manufacturer	HYUNDAI		
1.2	Type	22BHA-7	25BHA-7	30BHA-7
1.3	Drive : electric (battery or mains), diesel, petrol, fuel gas, manual	Electric	Electric	Electric
1.4	Type of operation : hand, pedestrian, standing, seated, order - picker	Seated	Seated	Seated
1.5	Load capacity (standard)	2200	2500	3000
1.6	Load center distance	500	500	500
1.8	Load distance, center of drive axle to forks	470	470	473
1.9	Wheelbase	1575	1575	1719

Weights

2.1	Service weight	kg	4194	4434	4895
2.2	Axle loading, loaded front / rear	kg	5721 / 673	6172 / 762	7081 / 814
2.3	Axle loading, unloaded front / rear	kg	2166 / 2028	2133 / 2301	2383 / 2512

Wheels, Chassis

3.1	Tires : solid rubber (V), superelastic (SE), pneumatic (P), polyurethane (PE)		SE, P	SE, P	SE, P
3.2	Tires size, front (ϕ x width)		23 x 9 - 10	23 x 9 - 10	23 x 9 - 10
3.3	Tires size, rear (ϕ x width)		18 x 7 - 8	18 x 7 - 8	18 x 7 - 8
3.5	Wheels, number front / rear (x = driven wheels)		2 x / 2	2 x / 2	2 x / 2
3.6	Track width, front	mm	993	993	993
3.7	Track width, rear	mm	980	980	980

Basic Dimensions

4.1	Mast / fork carriage tilt forward / backward (α/β)	degrees	6 / 8	6 / 8	6 / 8
4.2	Lowered mast height	h1 mm	2152	2152	2152
4.3	Free lift	h2 mm	115	115	115
4.4	Lift height	h3 mm	3300	3300	3300
4.5	Extended mast height	h4 mm	4485	4485	4485
4.7	Overhead load guard (cab) height	h5 mm	2150	2150	2150
4.8	Seat height / Standing height	h7 mm	1086	1086	1086
4.12	Coupling height	h10 mm	400	400	400
4.19	Overall length	l1 mm	3407	3472	3619
4.20	Length to face of forks	l2 mm	2357	2422	2569
4.21	Overall width	b1 mm	1200	1200	1200
4.22	Fork dimensions LxWxT	S x E x L mm	45 x 100 x 1050	45 x 100 x 1050	45 x 125 x 1050
4.23	Fork carriage ISO 2328, class / type A, B		II / A	II / A	III / A
4.24	Fork carriage width	b3 mm	1022	1022	1037
4.31	Ground clearance, loaded, under mast	m1 mm	107	107	107
4.32	Ground clearance, centre of wheelbase	m2 mm	125	125	125
4.33	Aisle width for pallets 1000 x 1200 crossways (LxW)	Ast mm	3650	3710	3840
4.34	Aisle width for pallets 800 x 1200 length ways (WxL)	Ast mm	3450	3510	3640
4.35	Turning radius	Wa mm	1970	2030	2170
4.36	Smallest pivot point distance	mm	-	-	-

Performance Data

5.1	Travel speed, loaded / unloaded (80 V)	km/h	18 / 19	18 / 19	18 / 19
5.2	Lift speed, loaded / unloaded (80 V)	mm/sec	420 / 500	410 / 500	340 / 500
5.3	Lowering speed, loaded / unloaded	mm/sec	500 / 450	500 / 450	500 / 450
5.5	Drawbar pull, loaded / unloaded S2 60 min	N	-	-	-
5.6	Max. drawbar pull, loaded / unloaded S2 5 min	N	18159 / 17883	18157 / 17808	18157 / 17808
5.7	Gradient performance, loaded / unloaded S2 30 min	%	-	-	-
5.8	Max. gradient performance, loaded / unloaded S2 5 min	%	29 / 26	26 / 25	23 / 25
5.9	Acceleration time, loaded / unloaded		-	-	-
5.10	Service brake		Hydraulic	Hydraulic	Hydraulic

E - Motor

6.1	Drive motor rating S2 60 min (80V)	kW	7.8 x 2	7.8 x 2	7.8 x 2
6.2	Pump motor rating at S3 - 15 % (80V)	kW	20	20	20
6.4	Battery voltage, nominal capacity K5 (80V)	V / Ah	500	500	600
6.5	Battery weight (min)	kg	1470	1470	1780
	Battery compartment dimensions L / W / H	mm	1032 / 714 / 790	1032 / 714 / 790	1032 / 858 / 790
6.6	Type of drive control		AC	AC	AC

Standard and optional equipment may vary. Contact your Hyundai dealer for more information. The machine shown may vary according to International standards. All US measurement are rounded off to nearest pound or inch. Materials and specifications are subject to change without notice.



Head Office(Sales Office)
1 JEONHA-DONG, DONG-GU, ULSAN, KOREA Tel (82) (52) 202-7970, 7729 Fax (82) (52) 202-7979, 7720

U.S. Operation : Hyundai Construction Equipment U.S.A., Inc.
955 ESTES AVENUE, ELK GROVE VILLAGE IL., 60007 Tel (1) 847-437-3333 Fax (1) 847-437-3574

European Operation : Hyundai Heavy Industries Europe N.V.
VOSSENDAAL 11, 2440 GEEL, BELGIUM Tel (32) 14-562200 Fax (32) 14-593405-06

India Operation : Hyundai Construction Equipment India Private Limited
303, 3rd Floor, Siddhivinayak Aurum, 33/1/1/2 Vadgaon Sheri,
Viman Nagar, Pune 411 014 India Tel 91-20-4003-8160 Fax 91-20-4003-8163

PLEASE CONTACT

www.hyundai.eu

EN - 2008. 03 Rev 0.