



*Photo may include optional equipment.

We build a better future

15/18/20BT-7 AC

FORKLIFT TRUCKS Environment Friendly

 **HYUNDAI**
HEAVY INDUSTRIES CO.,LTD.

The New AC Control BT Series

Designed with a durable frame and built to offer excellent stability and a smooth ride, AC Control BT Series trucks are real workhorses.



*Photo may include optional equipment.

High Technology ZAPI Controller

The efficient, almost noiseless, 8Khz (high frequency) ZAPI controller provides smooth operation, fault detection and protection for high & low voltage and overheating.

Features

- Regeneration: Direction change, Deceleration, Braking
- Efficiency of AC motor is higher than this of DC motor (10%)
- Improved use
- H (High) Mode, N (Normal) Mode, E (Economic) Mode
- Turtle Mode



15/18/20BT-7 AC

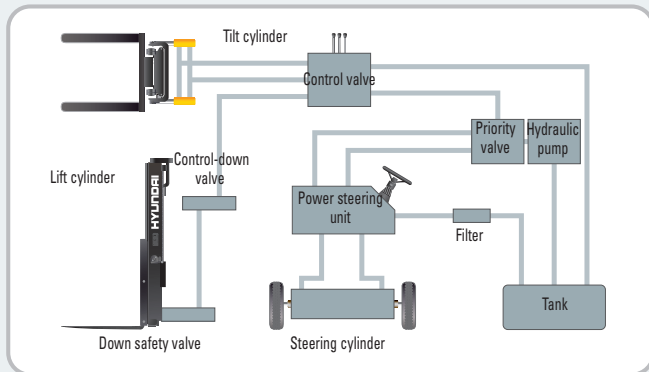
Superior Power & Optimal Performance

Smooth run, efficient and ergonomic design, AC Control BT series are built to meet your demands.



Fork Safety Features

When lowering the forks, a control-down valve maintains the adjusted speed. In case of sudden damage of hydraulic line, the down-safety valve prevents the forks for dropping down.

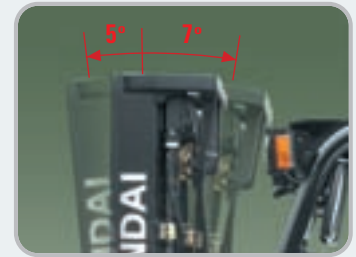


State-of-the-art Hydraulic System

The latest designed, large-capacity hydraulic system, including a low noise control valve, shortens reaction time during operation and increases efficiency and durability.

Anti-Rollback System, Faster Travel Speed & Grade-ability

The ZAPI's anti-rollback system provides a safe ramp operation plus an exceptional ramp start capability. The powerful high-output motor provides greater acceleration, better grade-ability and faster travel speed on any tough terrain or slope.



Increased Mast tilting Angle

Utilizing the mast tilting angle of 5 degrees forward and 7 degrees backward, the operator can safely and rapidly perform loading and unloading jobs.



Disc Type Brake



Center Pivot Turn



Enhanced Stability by Adopting Dual Rear tires

This feature provides better stability during lifting operation. Better control at high mast heights is another way to boost handling efficiency.

Travel Speed (MAX)

Model	km/h (mph)
15BT-7	17 (10.5)
18BT-7	17 (10.5)
20BT-7	17 (10.5)

Grade-ability (MAX)

Model	% (deg)
15BT-7	16.4 (29.5)
18BT-7	15.3 (27.5)
20BT-7	13.7 (24.5)



OPSS (Operator Presence Sensing System)



Adjustable Steering Wheel

Steering wheel can be adjusted by a lever on the right-hand side for the most comfortable operator position.



Easy Control Direction Lever

Forward and reverse lever with finger tip control allows the operator to keep control of the equipment.



Multi-Functional Switch

Integrated multi-functional switch lever enables the driver to operate lights and horn conveniently.



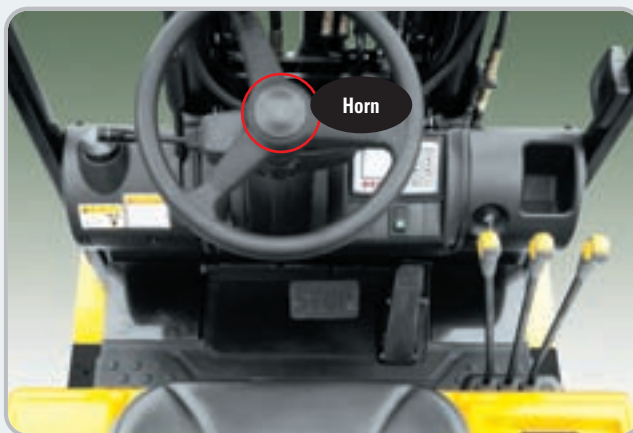
Prompt Response of Operating Control Levers

Only minimal operator's effort is required for precise, safe and productive control.



High visibility for safe operation

The operator is able to work with increased safety and accuracy due to a wider view.



Perfect Fit

An ergonomically designed operator's compartment enables the driver to select the most comfortable working position for increased productivity.



Optimum Pedal Position

Based on human engineering, the accelerator and brake pedals are optimally positioned for operator's convenience.



Easily Adjustable Suspension Seat

An attractive and adjustable seat, based on a human engineering design, provides great comfort, safety and durability.

*Options : Seat belt, Arm rests, Hip restraint



15/18/20BT-7 AC

Comfortable Operation

A design based on human engineering relieves fatigue and increases operator's efficiency.



AC Control System Features

- Excellent Controllability
 - Several performance modes according to working conditions (H.N.E mode - speed limit - Turtle mode)
 - Slow rolling on ramp & ramp start
- Enhanced System Efficiency : Excellent regeneration & Improved motor efficiency
- Lower maintenance costs : Less wear parts in heart of AC motor (no motor brushes or commutators)
- Enhanced durability by using a sealed AC motor

*Photo may include optional equipment.



Self - diagnosis LCD Monitor

The LCD monitor has a back-light system to provide a clear view of the system's operation in all circumstances. The monitor provides information about operation errors, system faults, battery level, hour meter, speed, selected mode plus other functions. (Self diagnosis / User Password / Speed Unit)

Keyboard Buttons

Operator can select performance modes easily according to working conditions.

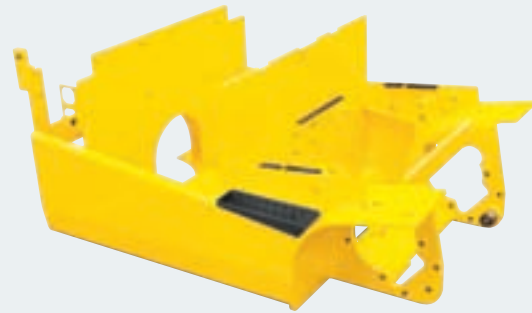
Console Box & Cup Holder

Additional storage spaces are located inside the operating space for operator's convenience.



High Durability & Simple Design

An ideal arrangement of components ensures easy access and convenience for maintenance.



Heavy Duty Single Frame

Designed on the basis of accurate structural analysis, a Heavy duty single type frame guarantees durability and safety.

*Photo may include optional equipment.



Strong Overhead Guard

The safety overhead guard meets EEC and ANSI regulations and protects the operator during hazardous jobs.



Parking Brake

Toggle type parking brake requires less effort from the operator to set.



Large Footboard & Hand Grip

Wide "open" step and a large hand grip ensure easy access to the operator's seat.

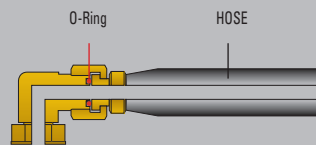


Rear Safety Lamp

Rear combination lamps with directional indicators, rear lights and brake lights are positioned for a high level of safety.



Battery Locking Device



ORFS (O-Ring Face Seal)

ORFS type hose prevents hydraulic oil leakage.

High quality AC motors

Enclosed motors prolong durability. Fewer wear parts in AC motor reduces maintenance costs and increases reliability.



Easy Maintenance & Serviceability

Opening and closing of battery cover is made easy by using a gas-spring assist cylinder.



Easy battery replacement

Battery change is made easy with swing-up compartment and slotted overhead guard.



A centralized fuse box for easy inspection



Oil Tank Port



Steering Sensor



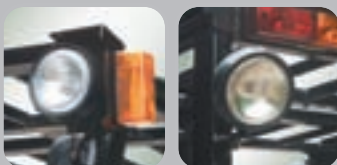
Hydraulic motor



Battery Disconnect Lever



Easy to Check Brake Oil Level



Bright Headlights & Rear Work Light



DC-DC Converter

DC-DC converter, satisfied with UL & CE, with protection against short circuit, overload and reverse polarity.

New 7 Series

Mast Specifications (15/18BT-7)

Mast Type		Overall Height (Lowered) mm (in)		Maximum Fork Height mm (in)		Free Lift mm (in)				Tilt Angle (degree) Forward / Backward		Load Capacity without side shift at 500 mm LC (24 in LC) kg (lb)		Load Capacity with side shift at 500 mm LC (24 in LC) kg (lb)		Truck Weight (Unloaded) kg (lb)	
						With Std Load Backrest		Without Backrest									
		15BT-7	18BT-7	15BT-7	18BT-7	15BT-7	18BT-7	15BT-7	18BT-7	15BT-7	18BT-7	15BT-7	18BT-7	15BT-7	18BT-7	15BT-7	18BT-7
2 / Stage limited free lift	V250	1,720 (67.7)	1,720 (67.7)	2,525 (99.4)	2,525 (99.4)	135 (5.3)	135 (5.3)	135 (5.3)	135 (5.3)	5 / 7	5 / 7	1,500 (3,000)	1,750 (3,500)	1,400 (2,800)	1,650 (3,300)	2,943 (6,488)	3,143 (6,929)
	V270	1,820 (71.7)	1,820 (71.7)	2,725 (107.3)	2,725 (107.3)	135 (5.3)	135 (5.3)	135 (5.3)	135 (5.3)	5 / 7	5 / 7	1,500 (3,000)	1,750 (3,500)	1,400 (2,800)	1,650 (3,300)	2,956 (6,517)	3,156 (6,958)
	V300	1,970 (77.6)	1,970 (77.6)	3,025 (119.1)	3,025 (119.1)	135 (5.3)	135 (5.3)	135 (5.3)	135 (5.3)	5 / 7	5 / 7	1,500 (3,000)	1,750 (3,500)	1,400 (2,800)	1,650 (3,300)	2,976 (6,560)	3,176 (7,001)
	* V330	2,120 (83.5)	2,120 (83.5)	3,325 (130.9)	3,325 (130.9)	135 (5.3)	135 (5.3)	135 (5.3)	135 (5.3)	5 / 7	5 / 7	1,500 (3,000)	1,750 (3,500)	1,400 (2,800)	1,650 (3,300)	2,995 (6,603)	3,195 (7,044)
	V350	2,220 (87.4)	2,220 (87.4)	3,525 (138.8)	3,525 (138.8)	135 (5.3)	135 (5.3)	135 (5.3)	135 (5.3)	5 / 7	5 / 7	1,500 (3,000)	1,750 (3,500)	1,400 (2,800)	1,650 (3,300)	3,008 (6,632)	3,208 (7,073)
	V370	2,320 (91.3)	2,320 (91.3)	3,725 (146.7)	3,725 (146.7)	135 (5.3)	135 (5.3)	135 (5.3)	135 (5.3)	5 / 7	5 / 7	1,500 (3,000)	1,750 (3,500)	1,400 (2,800)	1,650 (3,300)	3,022 (6,661)	3,222 (7,102)
	V400	2,470 (97.2)	2,470 (97.2)	4,025 (158.5)	4,025 (158.5)	135 (5.3)	135 (5.3)	135 (5.3)	135 (5.3)	5 / 7	5 / 7	1,500 (3,000)	1,750 (3,500)	1,400 (2,800)	1,650 (3,300)	3,045 (6,714)	3,245 (7,155)
	V450	2,820 (111.0)	2,820 (111.0)	4,525 (178.1)	4,525 (178.1)	135 (5.3)	135 (5.3)	135 (5.3)	135 (5.3)	5 / 5	5 / 5	1,500 (3,000)	1,750 (3,500)	1,400 (2,800)	1,650 (3,300)	3,109 (6,854)	3,309 (7,295)
	V500	3,070 (120.9)	3,070 (120.9)	5,025 (197.8)	5,025 (197.8)	135 (5.3)	135 (5.3)	135 (5.3)	135 (5.3)	5 / 5	5 / 5	1,450 (2,950)	1,700 (3,500)	1,365 (2,800)	1,614 (3,300)	3,142 (6,926)	3,342 (7,367)
	V550	3,320 (130.7)	3,320 (130.7)	5,525 (217.5)	5,525 (217.5)	135 (5.3)	135 (5.3)	135 (5.3)	135 (5.3)	5 / 5	5 / 5	1,400 (2,850)	1,450 (3,200)	1,320 (2,700)	1,365 (3,000)	3,174 (6,997)	3,374 (7,438)
3 / Stage full free lift	TF370	1,770 (69.7)	1,770 (69.7)	3,735 (147.0)	3,735 (147.0)	763 (30.0)	763 (30.0)	1,264 (49.8)	1,264 (49.8)	5 / 5	5 / 5	1,500 (3,000)	1,750 (3,500)	1,400 (2,800)	1,650 (3,300)	3,093 (6,818)	3,293 (7,259)
	TF400	1,870 (73.6)	1,870 (73.6)	4,035 (158.9)	4,035 (158.9)	863 (34.0)	863 (34.0)	1,364 (53.7)	1,364 (53.7)	5 / 5	5 / 5	1,500 (3,000)	1,750 (3,500)	1,400 (2,800)	1,650 (3,300)	3,108 (6,853)	3,308 (7,294)
	TF430	1,970 (77.6)	1,970 (77.6)	4,335 (170.7)	4,335 (170.7)	963 (37.9)	963 (37.9)	1,464 (57.6)	1,464 (57.6)	5 / 5	5 / 5	1,500 (3,000)	1,750 (3,500)	1,400 (2,800)	1,650 (3,300)	3,128 (6,896)	3,328 (7,337)
	TF450	2,070 (81.5)	2,070 (81.5)	4,535 (178.5)	4,535 (178.5)	1,063 (41.9)	1,063 (41.9)	1,564 (61.6)	1,564 (61.6)	5 / 5	5 / 5	1,500 (3,000)	1,750 (3,500)	1,400 (2,800)	1,650 (3,300)	3,143 (6,930)	3,343 (7,371)
	TF470	2,120 (83.5)	2,120 (83.5)	4,735 (186.4)	4,735 (186.4)	1,113 (43.8)	1,113 (43.8)	1,614 (63.5)	1,614 (63.5)	5 / 5	5 / 5	1,475 (2,950)	1,725 (3,500)	1,390 (2,800)	1,640 (3,300)	3,153 (6,951)	3,353 (7,392)
	TF500	2,220 (87.4)	2,220 (87.4)	5,035 (198.2)	5,035 (198.2)	1,216 (47.9)	1,216 (47.9)	1,714 (67.5)	1,714 (67.5)	5 / 5	5 / 5	1,450 (2,900)	1,700 (3,450)	1,365 (2,800)	1,600 (3,250)	3,173 (6,995)	3,373 (7,436)
	TF550	2,420 (95.3)	2,420 (95.3)	5,535 (217.9)	5,535 (217.9)	1,416 (55.7)	1,416 (55.7)	1,914 (75.4)	1,914 (75.4)	5 / 5	5 / 5	1,375 (2,800)	1,425 (3,150)	1,295 (1,860)	1,340 (2,950)	3,211 (7,078)	3,411 (7,519)
	TF600	2,620 (103.1)	2,620 (103.1)	6,035 (237.6)	6,035 (237.6)	1,613 (63.5)	1,613 (63.5)	2,114 (83.2)	2,114 (83.2)	5 / 5	5 / 5	925 (2,050)	1,000 (2,200)	845 (1,850)	930 (2,050)	3,274 (7,219)	3,474 (7,660)
	TF650	2,820 (111.0)	2,820 (111.0)	6,535 (257.3)	6,535 (257.3)	1,813 (71.4)	1,813 (71.4)	2,314 (91.1)	2,314 (91.1)	5 / 5	5 / 5	900 (1,950)	950 (2,100)	820 (1,800)	900 (1,950)	3,318 (7,315)	3,518 (7,756)
	TF700	3,020 (118.9)	3,020 (118.9)	7,035 (277.0)	7,035 (277.0)	2,013 (79.3)	2,013 (79.3)	2,514 (99.0)	2,514 (99.0)	5 / 5	5 / 5	600 (1,350)	650 (1,450)	550 (1,200)	600 (1,350)	3,355 (7,395)	3,555 (7,836)

* Standard

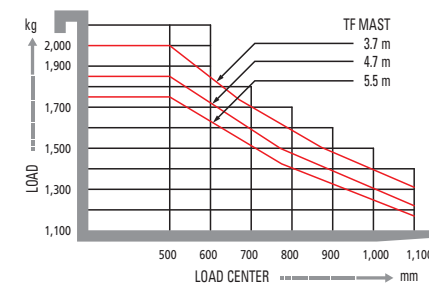
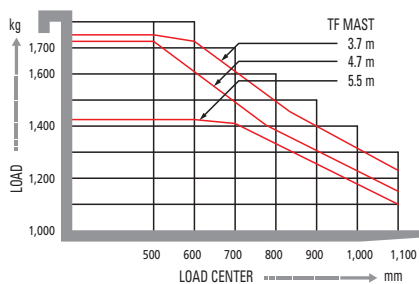
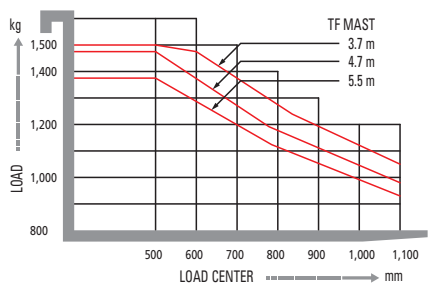
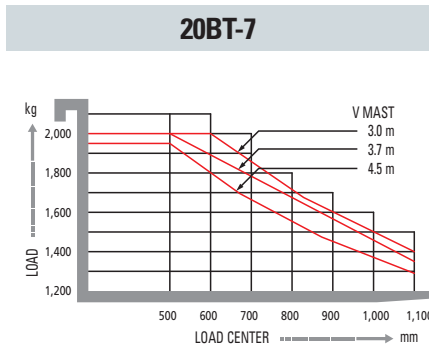
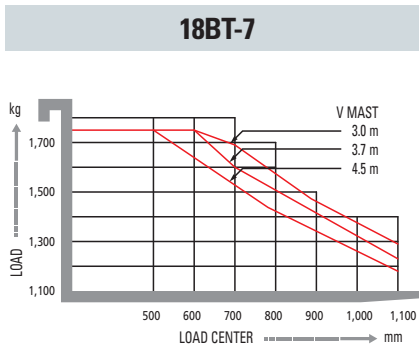
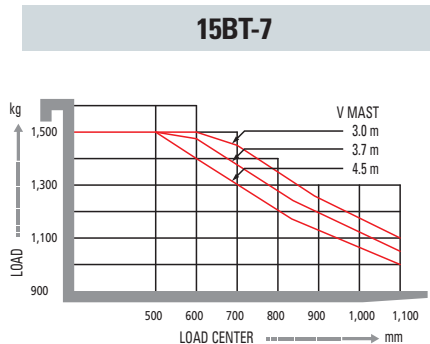
Mast Specifications (20BT-7)

Mast Type		Overall Height (Lowered) mm (in)		Maximum Fork Height mm (in)		Free Lift mm (in)		Tilt Angle (degree) Forward / Backward		Load Capacity without side shift at 500 mm LC (24 in LC) kg (lb)		Load Capacity with side shift at 500 mm LC (24 in LC) kg (lb)		Truck Weight (Unloaded) kg (lb)	
						With Std Load Backrest									
		20BT-7	20BT-7	20BT-7	20BT-7	20BT-7	20BT-7	20BT-7	20BT-7	20BT-7	20BT-7	20BT-7	20BT-7	20BT-7	20BT-7
2 / Stage limited free lift	V250	1,729 (68.1)	1,729 (68.1)	2,530 (99.6)	2,530 (99.6)	140 (5.5)	140 (5.5)	140 (5.5)	140 (5.5)	5 / 7	5 / 7	2,000 (4,000)	1,890 (3,850)	1,890 (3,850)	3,305 (7,287)
	V270	1,829 (72.0)	1,829 (72.0)	2,730 (107.5)	2,730 (107.5)	140 (5.5)	140 (5.5)	140 (5.5)	140 (5.5)	5 / 7	5 / 7	2,000 (4,000)	1,890 (3,850)	1,890 (3,850)	3,319 (7,316)
	V300	1,979 (77.9)	1,979 (77.9)	3,030 (119.3)	3,030 (119.3)	140 (5.5)	140 (5.5)	140 (5.5)	140 (5.5)	5 / 7	5 / 7	2,000 (4,000)	1,890 (3,850)	1,890 (3,850)	3,338 (7,359)
	* V330	2,129 (83.8)	2,129 (83.8)	3,330 (131.1)	3,330 (131.1)	140 (5.5)	140 (5.5)	140 (5.5)	140 (5.5)	5 / 7	5 / 7	2,000 (4,000)	1,890 (3,850)	1,890 (3,850)	3,358 (7,403)
	V350	2,229 (87.8)	2,229 (87.8)	3,530 (139.0)	3,530 (139.0)	140 (5.5)	140 (5.5)	140 (5.5)	140 (5.5)	5 / 7	5 / 7	2,000 (4,000)	1,890 (3,850)	1,890 (3,850)	3,371 (7,432)
	V370	2,329 (91.7)	2,329 (91.7)	3,730 (146.9)	3,730 (146.9)	140 (5.5)	140 (5.5)	140 (5.5)	140 (5.5)	5 / 7	5 / 7	2,000 (4,000)	1,890 (3,850)	1,890 (3,850)	3,384 (7,461)
	V400	2,479 (97.6)	2,479 (97.6)	4,030 (158.7)	4,030 (158.7)	140 (5.5)	140 (5.5)	140 (5.5)	140 (5.5)	5 / 7	5 / 7	2,000 (4,000)	1,890 (3,850)	1,890 (3,850)	3,408 (7,513)
	V450	2,829 (111.4)	2,829 (111.4)	4,530 (178.3)	4,530 (178.3)	140 (5.5)	140 (5.5)	140 (5.5)	140 (5.5)	5 / 5	5 / 5	1,950 (4,000)	1,845 (3,850)	1,845 (3,850)	3,472 (7,653)
	V500	3,079 (121.2)	3,079 (121.2)	5,030 (198.0)	5,030 (198.0)	140 (5.5)	140 (5.5)	140 (5.5)	140 (5.5)	5 / 5	5 / 5	1,850 (4,000)	1,750 (3,850)	1,750 (3,850)	3,504 (7,725)
	V550	3,329 (131.1)	3,329 (131.1)	5,530 (217.7)	5,530 (217.7)	140 (5.5)	140 (5.5)	140 (5.5)	140 (5.5)	5 / 5	5 / 5	1,800 (3,950)	1,700 (3,750)	1,700 (3,750)	3,537 (7,797)
3 / Stage full free lift	TF370	1,779 (70.0)	1,779 (70.0)	3,740 (147.2)	3,740 (147.2)	777 (30.6)	777 (30.6)	1,278 (50.3)	1,278 (50.3)	5 / 5	5 / 5	2,000 (4,000)	1,890 (3,850)	1,890 (3,850)	3,455 (7,617)
	TF400	1,879 (74.0)	1,879 (74.0)	4,040 (159.1)	4,040 (159.1)	877 (34.5)	877 (34.5)	1,378 (54.3)	1,378 (54.3)	5 / 5	5 / 5	1,950 (4,000)	1,850 (3,850)	1,850 (3,850)	3,471 (7,652)
	TF430	1,979 (77.9)	1,979 (77.9)	4,340 (170.9)	4,340 (170.9)	977 (38.5)	977 (38.5)	1,478 (58.2)	1,478 (58.2)	5 / 5	5 / 5	1,900 (4,000)	1,800 (3,800)	1,800 (3,800)	3,491 (7,695)
	TF450	2,079 (81.9)	2,079 (81.9)	4,540 (178.7)	4,540 (178.7)	1,077 (42.4)	1,077 (42.4)	1,578 (62.1)	1,578 (62.1)	5 / 5	5 / 5	1,875 (4,000)	1,775 (3,750)	1,775 (3,750)	3,506 (7,729)
	TF470	2,129 (83.8)	2,129 (83.8)	4,740 (186.6)	4,740 (186.6)	1,127 (44.4)	1,127 (44.4)	1,628 (64.1)	1,628 (64.1)	5 / 5	5 / 5	1,850 (4,000)	1,750 (3,700)	1,750 (3,700)	3,515 (7,750)
	TF500	2,229 (87.8)	2,229 (87.8)	5,040 (198.4)	5,040 (198.4)	1,227 (48.3)	1,227 (48.3)	1,728 (68.0)	1,728 (68.0)	5 / 5	5 / 5	1,800 (3,950)	1,700 (3,650)	1,700 (3,650)	3,535 (7,794)
	TF550	2,429 (95.6)	2,429 (95.6)	5,540 (218.1)	5,540 (218.1)	1,427 (56.2)	1,427 (56.2)	1,928 (75.9)	1,928 (75.9)	5 / 5	5 / 5	1,750 (3,850)	1,650 (3,600)	1,650 (3,600)	3,573 (7,877)
	TF600	2,629 (103.5)	2,629 (103.5)	6,040 (237.8)	6,040 (237.8)	1,627 (64.1)	1,627 (64.1)	2,128 (83.8)	2,128 (83.8)	5 / 5	5 / 5	1,350 (2,950)	1,275 (2,800)	1,275 (2,800)	3,637 (8,018)
	TF650	2,829 (111.4)	2,829 (111.4)	6,540 (257.5)	6,540 (257.5)	1,827 (71.9)	1,827 (71.9)	2,328 (91.7)	2,328 (91.7)	5 / 5	5 / 5	1,300 (2,850)	1,225 (2,700)	1,225 (2,700)	3,681 (8,115)
	TF700	3,029 (119.3)	3,029 (119.3)	7,040 (277.2)	7,040 (277.2)	2,027 (79.8)	2,027 (79.8)	2,528 (99.5)	2,528 (99.5)	5 / 5	5 / 5	900 (1,950)	850 (1,850)	850 (1,850)	3,717 (8,195)

* Standard

15/18/20BT-7 AC

Load Capacity

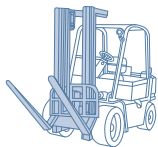


* 2-Stage limited free lift

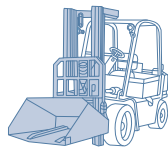
Various Attachments



Sideshift



Hinged Forks



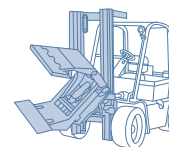
Hinged Bucket



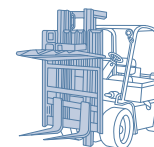
Rotating Forks



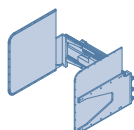
Push Pull



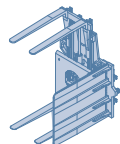
Rotating Roll Clamp



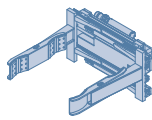
Load Stabilizer



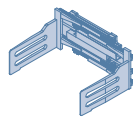
Carton Clamp



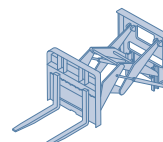
Pallet Turnover



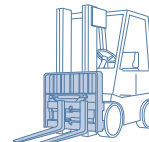
Drum Clamp



Bale Clamp



Reach Forks



Fork Positioner

Optional Items

• **Mast**

2-Stage mast (Max. Fork Height) (mm)

2500 / 2700 / 3000 / 3300 / 3500 / 3700 / 4000 / 4500 / 5000 / 5500

3-Stage mast (Max. Fork Height) (mm)

3700 / 4000 / 4300 / 4500 / 4700 / 5000 / 5500 / 6000 / 6500 / 7000

Dual free lift 3-Stage Mast (Max. Fork Height) (mm)

3700 / 4000 / 4300 / 4500 / 4700 / 5000 / 5500 / 6000 / 6500 / 7000

• **Sideshift**

Sideshift, Integrated sideshift

• **Forks**

Long forks

- 35 x 100 x 900 / 1000 / 1050 / 1150 / 1200 / 1350 / 1500
- 40 x 100 x 900 / 950 / 1000 / 1050 / 1150 / 1200 / 1350 / 1500 / 1600

• **Valves & Hose Piping**

3 Spool Internal & 4 Spool Internal Type

• **Dual Voltage:** 36/48 Volt

• **Cold Storage:** Possible until -30°C working area

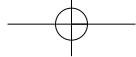
• **UL & CE:** UL Type "E" & "EE"

• **Finger Tip Control**

Enhanced operator comfort

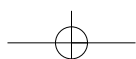
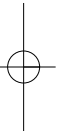
• **Tires**

Solid, Non-Marking cushion Tire



Notes

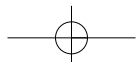
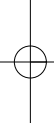
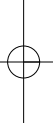
Lined area for taking notes, consisting of multiple horizontal lines.



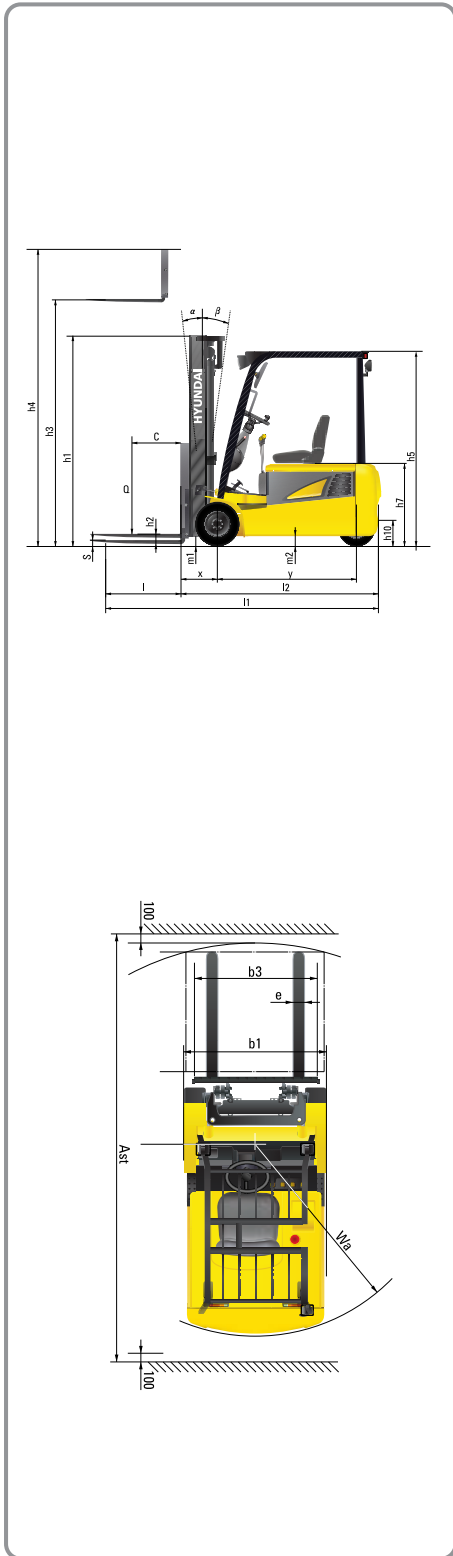


Notes

A large rectangular area containing 25 horizontal lines for writing notes.



Dimensions



Specifications

Identification

		HYUNDAI	HYUNDAI	HYUNDAI
1.1	Manufacturer	HYUNDAI	HYUNDAI	HYUNDAI
1.2	Type	15BT-7	18BT-7	20BT-7
1.3	Drive : electric (battery or mains), diesel, petrol, fuel gas, manual	Electric	Electric	Electric
1.4	Type of operation : hand, pedestrian, standing, seated, order-picker	Seated	Seated	Seated
1.5	Load capacity / rated load	Q (t)	1.5	1.8
1.6	Load center distance	c mm (in)	500 (24)	500 (24)
1.8	Load distance, center of drive axle to fork	x mm (in)	360 (14.2)	360 (14.2)
1.9	Wheelbase	y mm (in)	1,355 (53.3)	1,440 (56.7)

Weights

2.1	Service weight	kg (lb)	2,980 (6,570)	3,180 (7,011)
2.2	Axle loading, loaded front / rear	kg (lb)	3,980/500 (8,774/1,102)	4,352/578 (9,594/1,274)
2.3	Axle loading, unloaded front / rear	kg (lb)	1,500/1,480 (3,307/3,263)	1,543/1,637 (3,402/3,609)

Wheels, Chassis

3.1	Tires : solid rubber, superelastic, pneumatic, polyurethane		Superelastic	Superelastic
3.2	Tires size, front (Φ x width)		18 x 7 - 8	200 / 50 - 10
3.3	Tires size, rear (Φ x width)		15 x 4.5 - 8	15 x 4.5 - 8
3.5	Wheels, number front / rear (x = driven wheels)		2x / 2	2x / 2
3.6	Track width, front	mm (in)	895 (35.2)	905 (35.6)
3.7	Track width, rear	mm (in)	170 (6.7)	170 (6.7)

Basic Dimensions

			5 / 7	5 / 7	5 / 7
4.1	Mast / fork carriage tilt forward / backward (α/β)	degrees	5 / 7	5 / 7	5 / 7
4.2	Lowered mast height	h1 mm (in)	2,120 (83.5)	2,120 (83.5)	2,129 (83.8)
4.3	Free lift	h2 mm (in)	135 (5.3)	135 (5.3)	135 (5.3)
4.4	Lift height	h3 mm (in)	3,300 (130)	3,300 (130)	3,300 (130)
4.5	Extended mast height	h4 mm (in)	4,332 (170.6)	4,332 (170.6)	4,332 (170.6)
4.7	Overhead load guard (cab) height	h5 mm (in)	1,970 (77.6)	1,970 (77.6)	1,980 (78)
4.8	Seat height	h7 mm (in)	920 (36.2)	920 (36.2)	930 (36.6)
4.12	Coupling height	h10 mm (in)	410 (16.1)	410 (16.1)	410 (16.1)
4.19	Overall length	l1 mm (in)	2,815 (110.8)	2,900 (114.2)	2,945 (116)
4.20	Length to face of forks	l2 mm (in)	1,915 (75.4)	2,000 (78.7)	2,045 (80.5)
4.21	Overall width	b1 mm (in)	1,100 (43.3)	1,100 (43.3)	1,105 (43.5)
4.22	Fork dimensions	S x E x L mm (in)	900x100x35 (35.4x3.9x1.4)	900x100x35 (35.4x3.9x1.4)	900x100x40 (35.4x3.9x1.6)
4.23	Fork carriage ISO 2328, class / type A, B		II A	II A	II A
4.24	Fork - carriage width	mm (in)	980 (38.6)	980 (38.6)	980 (38.6)
4.31	Ground clearance, loaded, under mast	m1 mm (in)	85 (3.3)	85 (3.3)	94 (3.7)
4.32	Ground clearance, centre of wheelbase	m2 mm (in)	90 (3.5)	90 (3.5)	100 (3.9)
4.33	Aisle width for pallets 1000 x 1200 crossways	Ast mm (in)	3,255 (128.1)	3,330 (131.1)	3,370 (132.7)
4.34	Aisle width for pallets 800 x 1200 lengthways	Ast mm (in)	3,075 (121.1)	3,150 (124)	3,190 (125.6)
4.35	Turning radius	Wa mm (in)	1,570 (61.8)	1,645 (64.8)	1,685 (66.3)
4.36	Smallest pivot point distance	mm (in)	-	-	-

Performance Data

			16/17 (3.4/3.6)	16/17 (3.4/3.6)	16/17 (3.4/3.6)
5.1	Travel speed, loaded / unloaded	(48V) km/h (mph) (36V) km/h (mph)	16/17 (3.4/3.6) 15/16 (3.2/3.4)	16/17 (3.4/3.6) 15/16 (3.2/3.4)	16/17 (3.4/3.6) 15/16 (3.2/3.4)
5.2	Lift speed, loaded / unloaded	(48V) mm/sec (fpm) (36V) mm/sec (fpm)	410/600 (80.7/118.1) 330/500 (65/98.4)	410/600 (80.7/118.1) 330/500 (65/98.4)	410/600 (80.7/118.1) 330/500 (65/98.4)
5.3	Lowering speed, loaded / unloaded	mm/sec (fpm)	500/450 (98.4/88.6)	500/450 (98.4/88.6)	500/450 (98.4/88.6)
5.5	Drawbar pull, S2 30 min	(loaded) N (unloaded) N	3,300 3,427	3,252 3,388	2,992 3,198
5.6	Max. drawbar pull, S2 5 min	(loaded) N (unloaded) N	15,102	15,190	14,367
5.7	Gradient performance, S2 3 min	(loaded) % (unloaded) %	- -	- -	- -
5.8	Max. gradient performance, S2 5 min	(loaded) %	29.5	27.5	24.5
5.10	Service brake	-	Hydraulic	Hydraulic	Hydraulic

E - Motor

			4.4 / 3.5	4.4 / 3.5	4.4 / 3.5
6.1	Drive motor rating S2 60 min	(48 V / 36 V) kW	4.4 / 3.5	4.4 / 3.5	4.4 / 3.5
6.2	Pump motor rating at S3 - 15 %	(48 V / 36 V) kW	15.8 / 9.9	15.8 / 9.9	15.8 / 9.9
6.4	Battery voltage, nominal capacity K5	(48 V / 36 V) Ah	505 / 800	585 / 1,000	585 / 1,000
6.5	Battery weight (min)	kg (lb)	710 (1,565)	835 (1,841)	835 (1,841)
	Battery dimensions L / W / H	mm (in)	990/545/636 (39/21.5/25)	990/545/630 (39/24.8/25)	990/545/630 (39/24.8/25)
6.6	Type of drive control	-	AC	AC	AC

Contact your Hyundai dealer for more information. The machine shown may vary according to International standards.
All US measurement rounded off to nearest pounds or inches. Materials and specifications are subject to change without notice.



Head Office (Sales Office) 1 CHEONHA-DONG, DONG-KU, ULSAN, KOREA
Tel: (82) (52) 202-7970, 7729 Fax: (82) (52) 202-7979, 7720

U.S. Operation Hyundai Construction Equipment U.S.A., Inc.
955 ESTES AVENUE, ELK GROVE VILLAGE IL. 60007
Tel: (1) 847-437-3333 Fax: (1) 847-437-3574

European Operation Hyundai Heavy Industries Europe N.V.
VOSSENDAAL 11, 2440 GEEL, BELGIUM
Tel: (32) 14-562200 Fax: (32) 14-593405 ~ 06

PLEASE CONTACT

www.hyundai.eu

EN - 2007. 12 Rev 0